



Blackall-Tambo
Regional Council

regional sport and recreation plan



March 2010



Blackall Tambo Regional Council

Regional Sport and Recreation Plan

March 2010

ROSS
planning



Queensland Government

"The Queensland Government provided \$40,500 to Blackall Tambo Regional Council to prepare a sport and recreation plan to get more Queenslanders active through sport and recreation."

This report has been prepared by:

ROSS Planning Pty Ltd
ABN 41 892 553 822
9/182 Bay Terrace
(Level 4 Flinders House)
Wynnum QLD 4178

PO Box 5660
Manly QLD 4179

Telephone: (07) 3901 0730
Fax: (07) 3893 0593

© 2010 ROSS Planning Pty Ltd

This document may only be used for the purposes for which it was commissioned and in accordance with the terms of engagement for the commission. Unauthorised use of this document in any form whatsoever is prohibited.

TABLE OF CONTENTS

Study Purpose and Outcomes	1
Purpose	1
Need	1
Study Approach	1
Background Research	2
Relevant Reports and Studies	2
Demographics and Population Changes	4
Trends in Sport and Recreation	6
Demand Assessment (Consultation)	8
Council Staff/Councillors	8
Club Interviews	9
Young People - Playshops	12
Community Meetings	13
School Principals	14
Additional Consultation	15
Sport and Recreation Facilities	20
Blackall Facilities	21
Tambo Facilities	30
Parks and Pathways	39
Parks	39
Pathways	42
Blackall Showgrounds Concept Plan	44
Recommendations	47
Maintenance and Improvement of Existing Facilities and Programs	48
New Facilities, Programs and Initiatives	49
Viability of Sport and Recreation Groups	50
Council Policies, Coordination and Management Arrangements	51
Appendix One	52
• Available Funding Opportunities	
Appendix Two	57
• Blackall Showgrounds Concept Plan	

STUDY PURPOSE AND OUTCOMES

SECTION 1

Purpose

The Purpose of the project, as established in the Project Brief issued to consultants, was to develop a Plan that would:

- provide direction and a framework for the development and maintenance of recreation and sport in the Blackall Tambo Region, identifying the community needs and matching them to Council resources so that opportunities for sport and recreation are accessible and equitable, and provided for in a cost efficient and effective way
- provide strategies for maintaining and increasing participation levels in recreation and sport that are consistent with the needs and aims of individual Clubs/Associations
- develop strategies to optimise all sporting complexes, including the provision of a concept design for the Blackall Recreation Reserve and a walking trail network in Tambo, aimed at meeting the needs of the stakeholders involved whilst providing direction for Council's contribution of funds.

Need

This project is a response to the need identified by the Blackall Tambo Regional Council to develop a coordinated Plan for the new region to:

- identify needs and provide direction for the future allocation of resources to assist in achieving the strategies in Council's Corporate Plan
- ensure these needs include the provision and support of recreation and sporting facilities to enable people to undertake a range of activities that are achievable within the constraints of the region's location, size and available resources
- provide Council with strategies for maintaining and developing the region's sport and recreation areas commensurate with Council's resources and community needs.

Study Approach

The Purpose and Goals have driven the approach used to deliver this Blackall Tambo Sport and Recreation Plan.

The study approach used has been to:

- inspect all facilities where sport and recreation was undertaken
- meet with all sport and recreation clubs in the region
- hold four community meetings
- meet with various community groups
- meet with Council Officers/Councillors interested in the study
- develop a draft sport and recreation plan.

At this point, the draft Sport and Recreation Plan will go on public display. Submissions will be received and amendments made where the Steering Committee and the consultants agree that it improves the Plan.

The final Sport and Recreation Plan will then be forwarded to Blackall Tambo Regional Council for adoption.

Relevant Reports and Studies

The following documents available to the study team:

- Blackall Tambo Regional Council - Corporate Plan 2009 to 2014 (working copy)
- Blackall Shire Sport and Recreation Development Plan 2005-2012
- Tambo Shire 2010 Sport and Recreation Development Plan
- various other planning documents.

Blackall Tambo Regional Council - Corporate Plan 2009 to 2014

Following a community process which began in January 2009, the final Corporate Plan 2009-2014 was adopted on 10th June 2009.

Sections of the Corporate Plan that are of particular relevance to this Sport and Recreation Plan are as follows.

The Vision Statement for Council includes:

“The Blackall Tambo Region is an active, healthy and progressive community rich in social capital. Its residents enjoy state of the art health, education, cultural, recreational and business facilities and opportunities.”

Included in Council's long term goals (20 years) are:

- Recreation - the provision of a wide range of state of the art sporting and recreation facilities.
- Youth - supporting youth being a valued partner in the community.

In regard to the Recreation goal, several strategies are provided:

- develop/review and implement Sport and Recreation Plan for the region
- Sport and Recreation Plan provides for adequate recreation facilities for a more active lifestyle
- Sport and Recreation Plan provides for the establishment of new and upgrade of existing facilities (community gyms, indoor sporting complexes, walking and cycling trails)
- Sport and Recreation Plan reviews Blackall Aquatic Centre for effectiveness and efficiency.

In regard to the Youth goal, one strategy is particularly relevant to the Sport and Recreation Plan:

- work with youth to establish facility.

Blackall Shire Sport and Recreation Development Plan 2005-2012

This was the first Sport and Recreation Plan undertaken by the former Blackall Shire Council, due to Council's need to manage and monitor the sport and recreation facilities within the community.

Key recommendations contained within the Plan that of relevance are as follows.

Facilities:

- Blackall Aquatic Centre redevelopment
- Blackall skate park (improvements such as seating, water and shade)
- walking trail and bike path development
- gym development in Blackall
- encouraging and assisting community organisations to undertake facility or club development plans
- working with the school to establish a community use program of the school facilities.

Organisations:

- accessing training for risk management and assisting all organisations to undertake Risk Management Plans for the organisation and associated facilities
- engaging the community to discuss, identify and implement solutions for the transport to activities issue.

People:

- investigating management options for the youth centre to increase opening hours
- involving young people in discussions and decisions on how best to manage the youth centre for them.

Tambo Shire 2010 Sport and Recreation Development Plan

This Sport and Recreation Development Plan was undertaken by the Tambo Shire Council to identify the community needs and match them to Council's resources so that opportunities for sport and recreation were accessible and equitable, and provided for in a cost efficient and effective way.

Areas that impacted on participation and planning in Tambo Shire were identified as;

- the need for club development plans identifying priority areas and goals
- the need for access to training in administration and club management
- a role for Council to monitor events for social/economic contribution
- building relationships with (the former) Sport and Recreation Queensland, Australian Sports Commission and Regional and State Sporting Organisations
- developing facilities to an acceptable standard for multi share viability.

The priority needs for the Shire were summarised into the following:

- develop a multi purpose sporting group to support all clubs and activities - Tambo Volunteer Support Group
- restructure Sports Club management and facility design - tennis, bowls, swimming, netball, gym, youth
- facility design improvements at rugby league/polocrosse/pony club/campdraft/rodeo facility
- dam/lake water activities - tourism opportunity
- training and education - event coordinators, coaches, officials and committee members.



Demographics and Population Changes

Demographics

The preliminary estimated resident population of the Blackall Tambo Region at 30 June 2008 was 2,067.¹

The break down of ages within the 2006 population is illustrated below in Figure 1. This illustrates that Blackall Tambo generally has an older population with higher percentages (than the State average) of people in the age cohorts over 45 years of age and lower percentages for the ages below 45 (with the exception of a slightly higher percentage of people aged 0-4 years).

Figure 1: Current population age distribution

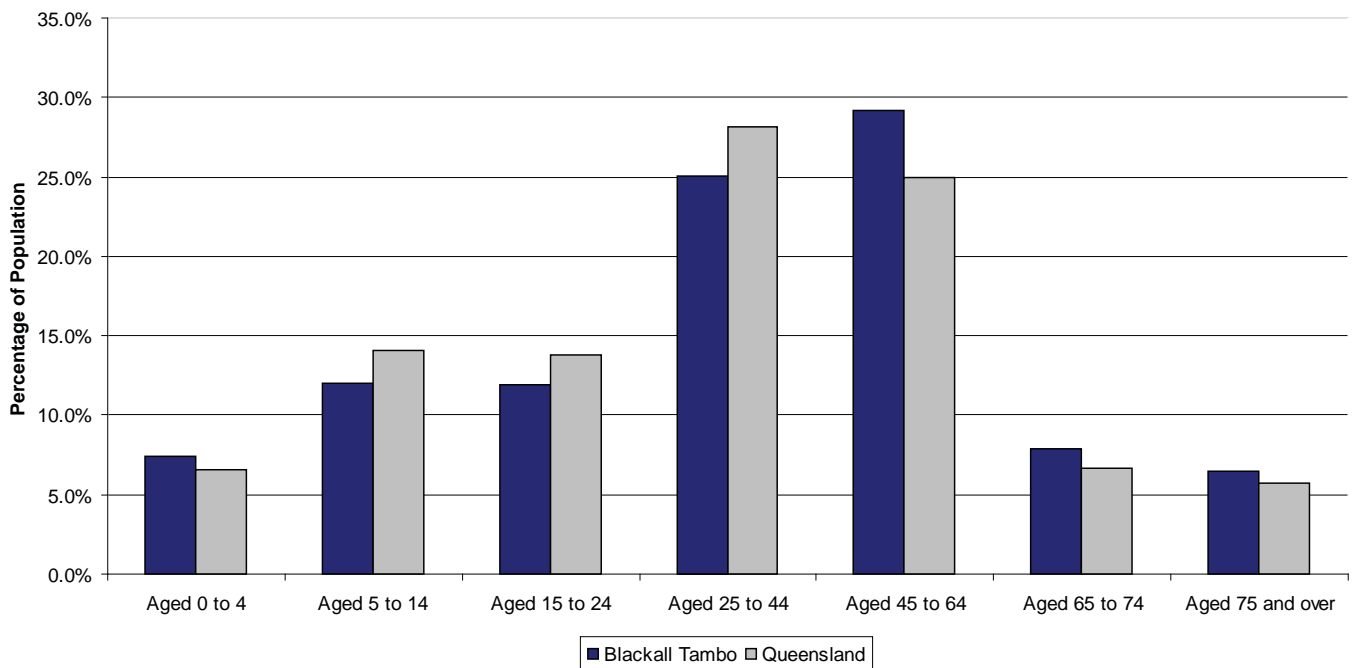


Figure 2 below illustrates a comparison of the percentages of population per age group in 2006 and those projected for the year 2031. Of particular note is the large decrease in the 0 to 14 age group and the large increase in the 65 and over group. It should be noted however, that this is expected to occur across Queensland, with the corresponding age groups for Queensland expecting similar increases and decreases respectively.

¹ Department of Infrastructure and Planning, Planning Information and Forecasting Unit, Population and housing fact sheet August 2009.

Figure 2: Age distribution 2006 and 2031

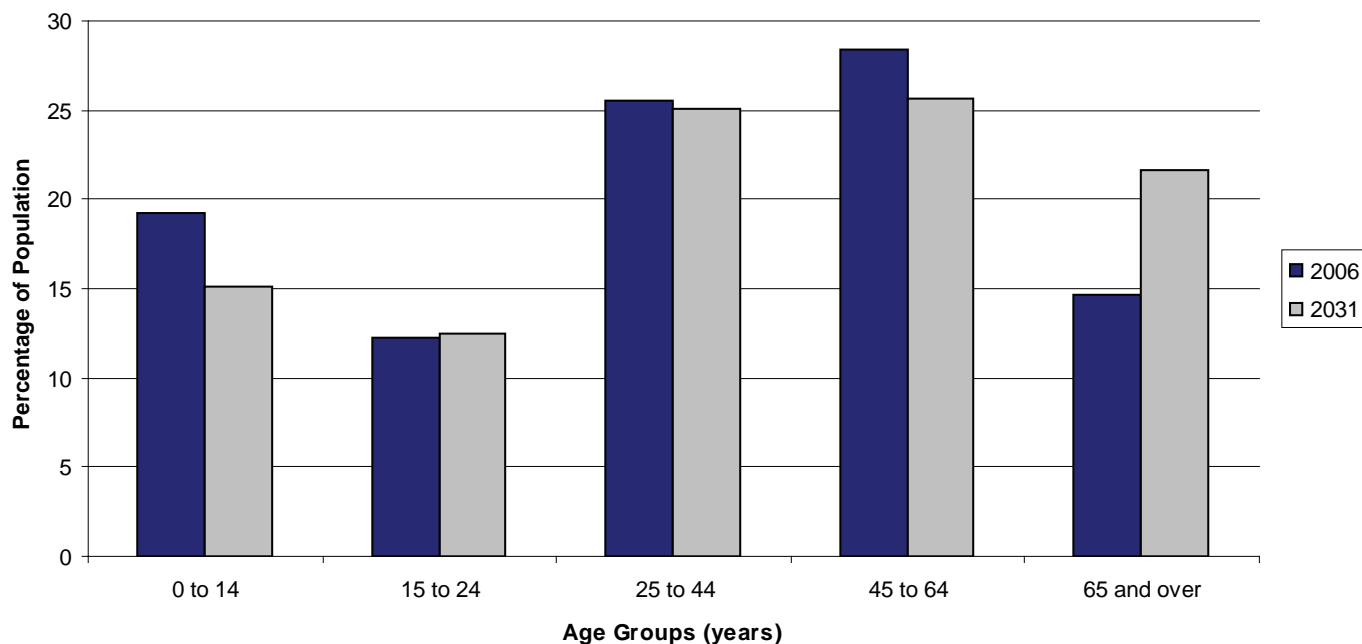


Table 1 below summarises a range of socio-demographic characteristics drawn from the 2006 Census. The Queensland results are shown as a point of reference.

Table 1: Socio-demographic characteristics

Characteristic	Blackall Tambo Region	Blackall Town	Tambo Town	Qld
Number of People	2,067	1,160	344	3,891,568
Ethnicity and Cultural Diversity				
Identifies as Indigenous	2.9%	2.9%	7.0%	3.3%
Born in Australia	91.9%	91.7%	93.3%	75.2%
Born Elsewhere	3.9%	3.9%	2.0%	17.9%
Speaks only English at home	97.4%	97.5%	98.5%	86.4%
Household Composition and Income				
Family households	69.3%	63.1%	69.9%	72.7%
Lone person households	28.6%	34.6%	28.0%	22.8%
Household income under \$350 per week	24.7%	28.7%	20.2%	15.1%
Household income under \$500 per week	30.6%	36.0%	26.3%	20.6%
Highest level of Schooling				
Yr 12 or equivalent	32.6%	27.6%	27.4%	45.9%
Yr 10 or equivalent	34.9%	34.4%	39.8%	29.9%
Yr 8 or below	19.9%	24.7%	19.5%	8.2%
Other Characteristics				
Males undertaking volunteer work	15.1%	14.1%	15.9%	8.4%
Females undertaking volunteer work	22.2%	19.5%	26.5%	11.9%
People undertaking volunteer work	37.4%	33.6%	42.4%	20.3%
Dwellings with an internet connection	49.2%	39.7%	46.3%	64.8%

Some points to highlight from the data provided in Table 1 include:

- a significantly high percentage of residents left school at year 8 or earlier
- the volunteer rate is almost double that of the State average
- almost all households are English speaking
- fewer dwellings have internet connection (than the State average)
- a high proportion of low income earners exist.

The ageing of the population is an important consideration for sport and recreation planning. An older population is more likely to seek unstructured recreation and physical activity pursuits such as walking, swimming, social clubs and travel. The significant proportion of people in this group (65+ years of age) will put pressure on Council to implement and continue to extend its footpaths and trails network particularly linking residential areas with parks, senior-orientated venues and services. It should be noted that the number of older residents is influenced by the presence of the aged care facility in Blackall.

With an older population and a high proportion of low income earners, the provision of low cost and easily accessible recreation and physical activity opportunities is imperative in the Blackall Tambo Region.

Population Changes

In a region the size of Blackall Tambo, population changes can be significantly influenced by changes in key business areas such as mining. The employment demands can mean that a large number of people, in a relatively short time, move to (or away from) the region. As such, the population estimates used in this report will need to be reviewed from time to time.

The impact of the proposed mining operations in the Alpha area is difficult to anticipate at this stage. While there are two large operations planned in the area north of Alpha, there is expected to be limited impact on the populations of Blackall and Tambo. It is anticipated that mine site camps will be established to house fly in/fly out workers.

The Queensland Department of Infrastructure and Planning predicts future Blackall Tambo populations as:

- 2011 - 2,052
- 2016 - 2,100
- 2021 - 2,143
- 2026 - 2,205
- 2031 - 2,281.

Trends in Sport and Recreation

Sporting Trends

Councils face an increasing trend to develop and re-develop sporting fields to a higher level in order to increase carrying capacity. Upgrades, such as field lighting and irrigation, allow training and competition times to be extended and increases the ability of fields to cope with the resulting wear and tear.

A number of sporting clubs have reported a decrease in membership over recent years. This may well be due to a declining and an ageing population.

A number of the sporting clubs in Blackall Tambo note that their facilities require upgrades to make them attractive to current, and potential new members, and to allow the clubs to bid to host higher level events. Most of these facilities are owned by Council and the users will be looking to Council to meet these costs. Even where a facility is not directly provided by Council, there is likely to be some pressure on Council to financially contribute.

One of the unique issues (compared with coastal clubs) faced by sporting clubs in the region is travel costs and travel time. Blackall and Tambo teams travelling to regional and state events face long transit times. Even for teams competing in local events, travel can be an issue. The QRL teams can be travelling several hours each weekend - a big ask to play club fixtures.

Recreation and Physical Activity

Factors such as age, gender and family life-stage can impact on the type of activities and frequency with which people recreate. For example, current trends show:

- walking is the single most frequently undertaken activity across the Queensland population (32.0%)
- along with walking, aerobics/ fitness, swimming, cycling and running are in the top five activities for Queensland residents
- there is substantially higher participation in informal, unstructured activities than in organised sports
- older people are more likely to participate in informal, unstructured activities with young people being more likely to engage in organised sports
- women, older adults, married people (or those in de-facto relationships), people in lower income households and obese people are less likely to participate in sufficient physical activity.

Table 2 details the physical activity preferences in 2007 and the changes since 2001.

Table 2: Physical activity preferences of Queenslanders

Activity	Total Participation Rate		% change 2001-2007
	2001	2007	
Walking (other)	28.8	33.0	23.7%
Aerobics/fitness	13.0	20.2	68.4%
Swimming	16.0	12.0	-18.6%
Cycling	9.5	9.7	10.6%
Running	7.2	7.6	14.8%
Tennis	9.2	5.8	-31.2%
Walking (bush)	5.3	5.7	16.6%
Golf	8.2	5.6	-26.2%
Football (outdoor)	3.7	4.2	23.9%
Netball	4.1	3.2	-15.4%



The Play Experience

To an adult, play is a way to pass time, with no immediate useful product. To a child however, play is doing something interesting or enjoyable that they are in control of. Through play, children can be anyone, at anyplace, at anytime.

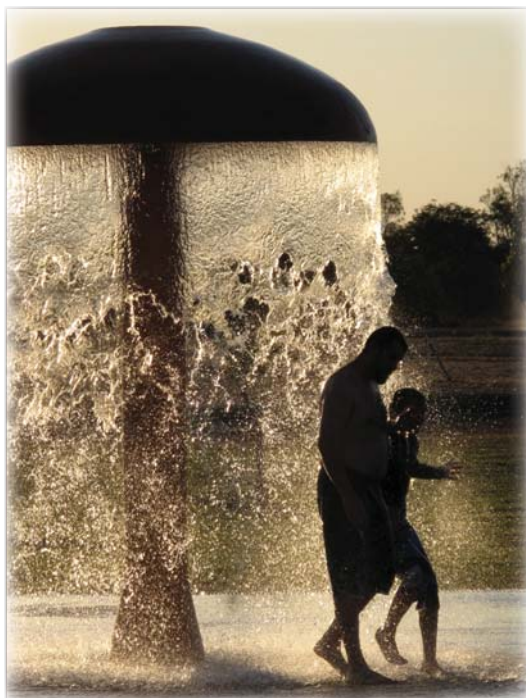
To a play-planner, play is the outcome of a sophisticated interaction between the physical setting, the play opportunities and the child users. When carefully planned, a play facility instantly delivers benefits to the delight of the child users. It can also have wider benefits such as promoting the child's physical, emotional and social competencies, or by providing a community asset for either active or passive enjoyment. Children at play should be seen as an integral component to any public park facility.

What, Where and How do we Play?

The criterion of a successful play experience is whether children want to return. Play experiences need to incorporate many or all of the following characteristics:

- Physical form—the play area needs to be adapted to the physical landscape (rocks, trees, and gullies) and supplemented by man-made variations (mounds, bridges, platforms). It can beneficially reflect the local sense of place or identity.
- Child and adult participants—consider the local demographics within the user groups. There is a need to offer separate areas for different age groups (2-5 years, 5-12 years, and 12+ years), while providing for active adult supervision or for adult passive watching.
- Safety—the play area should be accessible to all, including the physically challenged and supervisors with prams. The design must incorporate safety standards to prevent traumatic events, but still provide challenge and invitation to explore.
- Invitational design—this tends to be subtle, so that children spontaneously move between play opportunities - exploring and discovering, using their imaginations to create new uses for infrastructure or loose parts (water; sand, and leaves), interacting with each other and utilising rhythm, movement, co-ordination and balance.

When an area for play cannot deliver on the four points above, then the users will be less than satisfied and will not want to return.



A Play Experience versus a Playground

A play experience is, or should be, vibrant and exciting—whereas a playground is just the infrastructure that is provided. The difference is somewhat like that between a mountain bike ride and a stationary bicycle. More importantly, a play experience does not innately require the installation of structured play equipment. Interesting and interactive places to play and explore may be created by designing magical and evocative landscapes. This may include sculpting the earth or utilising the natural contours, planting (for example, vegetated tunnels or mazes, forests) and/ or utilising various textures and materials such as creative paving patterns (stepping stones, steps, edgings for balancing). A play space may incorporate interesting views or vistas, showcase art or innovation (mobiles and alternate energy sources), sculptural park furniture, landscape structures or buildings.

Play experiences may incorporate elements such as:

- storytelling/ sculpture trees
- labyrinth/ mazes/ tunnels of plants
- hidey holes
- mist water play
- meandering paths
- meeting places
- water jets
- musical play.

The common characteristic in all of these elements is that the infrastructure suggests (but never dictates) how it is to be used. Moreover, each element can be used in many ways—common sense says that a toddler will use a mist water play area quite differently to a 12 year old child.

Such unstructured play needs to complement and be integrated with other recreational facilities to encourage active recreation for children, youth and adults. Examples include:

- basketball courts/ hoops
- play structures/ equipment
- cycling/ pedestrian networks and skill development trails/ circuits
- attractive open space areas for ball games etc
- water play parks
- surfaces and markings for games such as hopscotch and handball
- swings for all ages including adults
- flying foxes/ climbing walls
- fitness stations/ training equipment.

The images on this page show various forms of play experience, quite different from the traditional playground.



DEMAND ASSESSMENT (CONSULTATION)

SECTION 3

To capture the views from a cross-section of residents, a broad-ranging consultation strategy was undertaken in the development of this Sport and Recreation Plan.

Council Staff/Councillors

In addition to a number of steering committee meetings, discussions were held with a range of Council staff and Councillors.

These people are valuable sources of information for the development of a Sport and Recreation Plan due to their deep understanding of many of the issues facing sport and recreation provision within their region. This information, especially when gained early in the study, allows the consultant team to achieve a broader view of these issues and adds to later discussions with individual sport and recreation providers. Further, the information is vital to ensure that unrealistic expectations are not raised for the community during the consultation process.

The main outcomes of these discussions are summarised as follows:

- The Towns of Tambo and Blackall currently operate differently in regard to the provision of assistance to sport and recreation clubs. While some staff believed that consistency across the region was needed, others suggested that the two systems could co-exist.
- Council staff would like to be made aware what clubs are doing with their facilities and equipment
- Clubs are struggling with management issues such as meeting procedures, fund raising/account keeping, facility maintenance and volunteer management.
- Council staff and Councillors recognise the amount of time and effort contributed by volunteers in the provision of sport and recreation opportunities.
- Council undertakes most maintenance of the sporting facilities.
- Council's long-term goal is to assist clubs become more self-sufficient.
- There were concerns regarding the lack of activities available for the region's youth.
- Any pathways to be developed should be multi-purpose and cater for bicycles, pedestrians, scooters, roller blades and wheelchairs.

Tourism

Discussions held with the staff of the Tourist Information Centre highlighted the importance of tourism to the future of the region, especially the 'grey nomads'.

During tourist season (start May to end October), the Information Centre often has up to 100 visitors a day, with approximately 13,000 total visits per year.



It was identified that there is an increasing trend in tourists wanting to actively participate in 'outback' experiences such as horse-riding, 4WD tours and station activities. This would indicate there are opportunities for local businesses/individuals to offer packages of these experiences. It was suggested that such experiences could also incorporate bush tucker and Indigenous education aspects.

Other outcomes of these discussions included:

- The Blackall Aquatic Centre is extremely popular with tourists, many of whom return on an annual basis to use the facility.
- Regular requests are received to have the museum at Ram Park opened more regularly.
- 'Out of the way' walking tracks are often sought and it is important that these are well signed to inform and direct visitors.
- A modern theme for signage around the region would be beneficial. Council has a good relationship with a graffiti artist who has completed a variety of popular works around town.
- The barbecue areas at the creek and at Banks Park could be upgraded. Further, the lights at Banks Park could be upgraded and equipment installed to provide activities for different ages to better cater for families.
- Motorbike riders need to be deterred from using the area along the creek where the caravans stop. This would also be a popular walking trail with locals if motorbike use was minimised.
- It was suggested that a lack of fitness/obesity is becoming an issue in the region and that qualified people are needed to educate residents how to exercise properly. There is gym equipment available, but no-one to supervise its use.
- Off-road cycling opportunities such as criterium tracks or bike education tracks would be popular.
- It was noted that the walking path in Longreach near the airport was an excellent facility with bush landscaping.



Club Interviews

All sport and recreation clubs based within the region were interviewed, mostly in person and some on the telephone.

The main outcomes of these interviews are summarised below (in no particular order). Please note that specific facility issues have been identified in Section 4 - Sport and Recreation Facilities.

Blackall Clubs

Blackall Campdraft Association

With a current membership of approximately 60-70 members, the Association is currently preparing to host the National Finals next year.

The club undertakes all the maintenance for their site and has been quite successful in obtaining grants for facility improvements.

The club's main concern is that following holding the National Finals, the interest levels of its members will decline and thus it will suffer a fall in membership. One initiative it has identified to help minimise this impact is to start organising school and community campdrafts, thus increasing their exposure in the community and raising interest.

Blackall Rugby League

The Senior rugby league does not currently have a team in the competition. It has identified that the biggest issue it faces is the type of jobs that local men have limits their ability to commit to a sport such as rugby league where regular training and games are required. Miners and those working properties are not able to make such commitments.

Issues for the juniors include the difficulty in travelling for games - both the cost and time involved - even when utilising the Council bus. The club would also like to see a gymnasium open in Town and believe it would work well if located in, or adjacent to, the aquatic centre.

It is hoped that the new mines planned for the area may result in higher participation, but there will still be issues related to these people being shift workers.

Blackall Golf Club

Currently with 47 members (including four juniors), the club has suffered a drop in membership as a result of the current drought conditions.

The club is proactive, with a Development Plan in place and it operates two days a week (Thursdays and Sundays). It was noted that the increase in Liquor Licence fees seriously impacts on their bottom line but it is essential, as bar sales are a major source of revenue and the club is also available for hire for functions.

The club would like to deliver more junior coaching programs but need qualified people to deliver them.

Blackall Tennis Club

40 junior members are included in the club's approximate membership of 100 with the number of senior members expected to remain constant while a growth is expected in junior numbers.

The club has identified that junior numbers are affected by Year 8 students going away to boarding school but is hopeful that membership will grow if the Alpha mines eventuate.

The club has an adequate number of volunteers but would like them to have access to courses that would provide training for coaching.

Blackall Bowls Club

With a total membership of approximately 40 (including Associates and 4 or 5 juniors), the club operates every Sunday, with the school also using its facilities twice a year. It also hosts 'money' games throughout the year.

The clubhouse is available for hire and the club hosts social barbecues every 4-6 weeks. The grey nomads often use the facility but the club believes there may be opportunities to increase this use.

Blackall Amateur Swimming Association

The Association has a current membership of approximately 45 juniors (parent membership is free and not necessarily recorded) and completed a Strategic Plan two years ago.

Through an arrangement with the Centre Manager, the Association does not pay for use of the Centre, except for carnivals. Revenue is based on sources such as club night and membership fees, raffles and catering for their own events.

The Association would like to see improvements such as a clubhouse (with gym, television and storage), electronic timing equipment and extensions to the existing spa that is properly heated and with disabled access. They would also like to have access to officiating courses that cover aspects such as time-keeping and judging.

Blackall Pistol Club

There are currently approximately 30 members of the Club, including two juniors. Members come from as far as Longreach due to there being a general lack of pistol clubs in the region (Charleville and Winton the closest) and the facility is also used by the Police for training purposes.

The Club meets fortnightly and its current focus is on attracting more members. The ongoing maintenance of the mound behind the two outdoor ranges is an issue, as is general grounds maintenance due to the lack of a slasher.

The possibility of using the extra paddock to run cattle is currently being investigated by the Club as an additional source of revenue.

Blackall Clay Target Club

With an approximate membership of 22, the Club is currently focussed on attracting more juniors. Shoots are currently held with Tambo, Ilfracombe and Barcaldine, and they would like to host a mid-week shoot between the annual Tambo and Scrubby Creek events.

One of the main issues facing the Club at the moment is the lack of 'informed' volunteers, with a very small number of people taking on most of the duties involved with operating the club and any events.

Barcoo Amateur Race Club

Recently given an extra race, there are now 5 race days each year at the facility, with at least four trainers based at the facility.

The club is currently struggling to maintain the kitchen, bar and betting facilities, which are in serious need of a major upgrade, and discussions are currently underway with Council to determine the future ongoing development and maintenance responsibilities of each.

Although functions are held at the site, the Club has identified that there is potential to hold more, especially if the desired facility upgrades are undertaken. They would also like to see a caretaker based on-site, subject to the future management arrangements.

Cone Break Pony Club

Located about 80km south-west of Blackall, the Club has approximately 40 members, experiencing a slight decrease in its

numbers over the past 3-4 years.

Due to the distances involved, the Club often uses the Blackall Showgrounds for its activities, and believes that this may increase in the future. It should be noted however, that the Club has no intention of losing its independent status as the Cone Break Pony Club.

One of the main issues facing the Club is accessing the training required for its members to become qualified instructors, thus relieving the financial burden on the Club when holding events. As a result of these savings, the Club would then be in a better financial position, allowing the provision of other activities, such as specialist instructors in disciplines like campdrafting.

The Club believes that the lack of people qualified to provide sport and recreation (in general) is an issue affecting the entire Blackall Tambo Region, with the current lack of netball activities being an example. It is also believed that better coordination between Towns would provide increased opportunities for families to participate. This may involve several sports/games being offered at the one time in the same Town, thus reducing the amount of travel required.

Tambo Clubs

Tambo Golf Club

Highly proactive with approximately 40 members, the Club has a current Development Plan in place and a highly cooperative relationship with Council.

With a focus on junior development, the club has experienced success in obtaining funding for junior programs and hopes that this will continue. An issue they face is the low number of members aged between 12 and 25 years, resulting in a loss of some very promising players over the years.

The Club is very satisfied with the assistance it receives from Council, especially that through the Aids to Society program.

Tambo Clay Target Club

48 members make up the Clay Target Club, which shares facilities with the Tambo Stock Show and Tambo Race Club.

The club pays approximately \$1,000/year to Council who maintains the grounds at the site, while the club also contributes to capital developments undertaken.

The Club's main source of revenue is bar takings at events and it hopes to increase the number and size of events it currently hosts through the construction of another trap.

Tambo Race Club

Recently losing two of its annual race meets (resulting in now hosting only two), the Club has concerns regarding the level of support it receives from Queensland Racing. It is believed that the bigger, 'strategic' clubs receive a much higher level of assistance, much to the detriment of the smaller venues.

Although the current facilities are very well maintained and highly functional, the Club is waiting the outcome of a QR audit that will identify any required facility improvements at the site.

As with the other two tenant groups at the site, the club pays an annual fee to Council (approximately \$2,300) in return for tenancy and maintenance and also contributes to capital developments at the site.

Tambo Stock Show

The Tambo Stock Show continues to attract over 600 people each year, offering displays, events and rides. Recently though, it has experienced difficulty in attracting a high level of involvement from the Side Show Association and side show attractions in general.

The committee is satisfied with its tenancy arrangement of paying approximately \$2,300 per year which includes power and maintenance.

Tambo Campdraft and Rodeo

While this group has concerns regarding the number of people serving on the committee, it does expect general membership to increase.

The Association is looking forward to the proposed new building being constructed which will replace a lot of the sub-standard facilities currently on site. Not only will the facility better serve its members and participants, it may allow the hosting of higher level events due to improved catering facilities, depending on the number of volunteers available to assist in hosting such events.

Although the Association is happy for the Polocrosse Club to share the main arena, it does not want to alter the surface and is keen for any agreements to be documented so that both parties contribute equally to developments/improvements/maintenance at the site.

Tambo Polocrosse

Currently operating on fields to the west of the of the campdraft/rodeo arena, the Club believes that relocating its main field to this arena would benefit their operations. Spectators would have improved viewing facilities and more direct access to amenities and bar/canteen facilities.

There is concern, however, that the arena's surface is not suitable for their activities and will be happy to remain where they are if it can not be altered.

Tambo Pony Club

The club has over 30 members, most of which are junior girls. It is believed that the lower number of boys is mainly due to clashes with football.

The club is well serviced by the Pony Club Association of Queensland who also provide a range of policies (safety, sun-safe, etc).

Rallies are offered at least fortnightly and the club attracts up to 80 participants at Tambo and Zone Shields. It should also be noted that Tambo actually participates in a different zone than Blackall.

The Club supports the proposed location of the new building and believes it will be a bonus for all tenant clubs. It also identified the need for a mobile cold room that would be available for all the clubs in Tambo.

Tambo Swim Club

Currently with approximately 30 members (juniors), the Club is not charged for its use of the pool when it meets on Wednesday afternoons or hosts its annual carnival.

The Club would like to see either solar heating or at least a pool blanket installed, with the hope of extending the swim season. It was also noted that it would be beneficial to reshape the soil mound adjacent to the main pool to provide more space and that a storage shed would allow the separation of Club and Centre equipment.

There may also need to be a clearer definition of roles between the Club and the lessee in regard to coaching, water aerobics and other

similar initiatives. There may be a need to provide access to providers of such activities, at a reasonable cost.

Tambo Sports Club

With a total of 110 members (20 juniors), the Club provides the sports of bowls, tennis, netball and cricket, with local youth also using the facility approximately once a week. The Club supports the idea of further developing the facility as a base for youth activities.

The Club has identified the need to develop a complete asset management plan for the site, especially if future development occurs. There were discussions regarding the creation of a precinct based around the sports club and aquatic centre, including the development of youth facilities and clubhouse extensions (see Section 4). The vacant land to the north of the site (the 'Story' block) could provide a connection to the school and Town, and also allow the development of a covered sport court facility. This development would not only complement and connect the facilities at the Sports Club and Aquatic Centre, it could also be utilised by the school and community in general.

Tambo Junior Rugby League

Located on the highway and adjacent to the pony club and camp draft facilities, the Club currently has approximately 20 players.

To field teams in the competitions between Under 8s through to under 14s, the Club combines with Augathella but does not compete against Blackall as they are in another district. 2-3 home games are held each season in Tambo.

The Club supports the construction of the new building (adjacent to the campdraft arena) but would like their change rooms upgraded, as well as the community bus. An automatic irrigation system was identified as a desired improvement, as was field maintenance equipment and a storage shed to house it.

The club intends to restart the social men's competition, with ad-hoc social games currently held between Tambo and Blackall.

Scrubby Creek Sports Club

The activities offered at the Scrubby Creek facility include shooting, golf, tennis and cricket.

Although exact membership numbers were not available, it was noted that they revolve around the gun club, with other sports having peaks and troughs in popularity.

The club has a social focus and provides easier access to sport and recreation activities for those living long distances from town centres. It is highly self-sufficient and tries to access external funding wherever possible.



Young People - Playshops

Discussions were held with students of the three schools within the towns of Blackall and Tambo. The aim of these sessions was to develop an understanding of sport and recreation issues facing the region's youth. The difference between 'sport' and 'recreation' was explained and the students were asked simple questions to ascertain what they liked and didn't like in regard to sport and recreation in the region. They were also asked for suggestions of improvements that would get their region more involved. The schools included in this process were:

- Blackall State School:
 - Years 4-7 and Years 8-12
- St Joseph's Catholic Primary School (Blackall)
 - Years 4-5 and Years 6-7
- Tambo State School

Blackall State School

Years 4-7

Of the sports that students participated in, the most popular were pony club, rugby league and tennis, with most identifying that they also used the aquatic centre at least once a week.

Positive aspects of sport and recreation in the region identified by the students included:

- the spa and warm water at the aquatic centre
- good tennis courts
- football camps
- the chance to go to other Towns when playing sport
- how parents share the driving responsibilities
- dance opportunities (new and exciting).

Negative aspects identified included:

- the deep end of the main pool being in the middle, not at the end and the surface (pebblecrete) is harsh
- not enough participants in the tennis fixtures - lots of travel
- the lack of a decent cricket pitch
- not enough boys attend the dance activities.

Students were then asked what improvements they would make, if given the opportunity. Responses were wide and varied with the major outcomes including:

- water play activities and diving board/s at the aquatic centre
- a community bus for travelling to sport events
- different dance styles offered such as rap, ballroom
- re-open the cinema
- get netball going all year round
- activities such as flying foxes and climbing walls
- a bigger skate park, with a junior section for younger kids.

Years 8-12

The high school students indicated that only a handful were involved in regular club sport (rugby league) and said that they weren't aware of the different activities on offer in Town.

They were asked the same questions as the primary students with the positive aspects including:

- the gym facilities at the school
- the last laser skirmish activity was popular.

Identified negative aspects of sport and recreation in the region included:

- the football field is uneven and dry
- they are unaware of activities until they occur
- nothing for girls to do.

Although only limited responses were received in regard to the above

positive and negative aspects of sport and recreation in the region, the group identified a range of suggestions that would improve the situation. These included:

- water play facilities at the aquatic centre
- a hang-out space at the skate park
- gymnasium re-opened, but at the aquatic centre
- the development of a youth centre near the skate park that would be open at night and provide games such as pool tables
- re-open the cinema
- laser/paintball skirmish
- improvements to facilities such as the climbing tower and skate park
- new facilities such as ten pin bowling, adventure ropes course and flying fox, motorcycle track, an indoor sports centre, and a gym at the aquatic centre.

St Joseph's Catholic Primary School

Two composite classes (Years 4-5 and Years 6-7) were asked the same questions as the State School students with very similar responses given by both groups. Rugby league, swimming and dance were the most popular activities that students participated in regularly.

The positive aspects of sport and recreation in the region identified by the students included:

- the spa, the different shape of the pool, and the amount of shade at the aquatic centre
- dance activities
- skate park.

Aspects that were viewed as negative by the children included:

- the aquatic centre's pools were too hot and the pebbles are sharp
- the football field is too hard and the grass cover is poor
- the timber floor where dance is held has splinters
- the dirt at the edges of the skate bowl causes accidents
- can't access the pony club due to the lack of a float.

When asked what they would improve around the region if they could, suggestions included:

- activities such as laser/paintball skirmish and rock climbing
- a bicycle track near the Barcoo
- other sports such as water polo, rugby union, archery, cricket, basketball, touch football and netball
- slides, jumps, water play and other novelties at the aquatic centre
- fixing the adventure/climbing tower at the showgrounds
- build a smaller skate facility next to the existing facility to reduce accidents, and install a playground
- reopen the cinema.



Tambo State School

Students from years 6-10 attended a discussion with the same questions as those asked at the Blackall schools.

The positive aspects identified by the students included:

- tennis - especially at night
- being able to play golf with friends
- youth group at the sport centre
- the dam.

The sport and recreation aspects of the region that weren't liked included:

- some areas of the tennis court surfaces weren't level due to air pockets
- the football field surface was covered in burrs
- the lack of a touch football competition
- pony club gets a bit monotonous - would like to see more trail rides
- the pool needs to be opened more and the actual opening times made clearer.

When asked what they would do if given the opportunity to improve sport and recreation in the region, the responses included:

- increasing the number of nights per week that tennis was offered
- starting a soccer and touch football competition
- water play and a spa at the aquatic centre
- develop the youth centre to include video games and to be supervised so kids can just 'hang out'
- develop skate park, climbing towers and playground equipment at EE Parr Park
- stock the dam with fish and install a jetty
- develop a gym somewhere
- more concrete cycle/walk paths
- motocross track.

Community Meetings

Two rounds of community meetings were held in both Blackall and Tambo. The initial presentations were to introduce the consultants and inform the community of both the purpose of the project and the type of input that would be sought.

The second round of community meetings were designed to investigate community issues in greater detail and for the consultants to raise issues that had been identified to date.

Initial Community Meetings

Blackall

The main issues facing the provision of sport and recreation in Blackall, identified by attendees, included:

- general club administration
- liquor licensing obligations including rules and regulations, fencing, etc
- catering for people with disabilities
- the different zones being split between the region so that Blackall and Tambo compete in different competitions.

Suggestions and ideas for improvements were discussed with the following outcomes:

- the creation of a central position that was responsible for undertaking tasks such as finance and secretarial duties could alleviate pressure on volunteers
- targeting tourists for fundraising could be a way to ease the burden on local residents and clubs

- having easy access to information on available grants and the relevant timeframes would be beneficial to all clubs.

It was also suggested that there are opportunities for improved partnerships between the community and schools. In regard to facilities, it was generally agreed that the development of a wet area for the community would be very popular.

Tambo

Attendees at the initial Tambo community meeting identified the following issues related to sport and recreation:

- the low participation of young people
- the distance required to travel for people living out of town - especially for those with more than one child
- Tambo and Blackall competing in different zones for most sports
- youth don't have access to typical youth sports and are limited to those such as golf, bowls, etc
- lack of qualified coaches
- the lack of easily accessible community bus adds to transport issues
- the lack of concrete paths for walking (dogs also deter people from participating)
- the focus should be on the local community first, tourists second
- there is a need for youth and walking programs
- would like to see a calendar of events on Council's website.

A range of facility improvements were identified, which included:

- extending the hours of the pool, especially for the swim club
- the development of walking trails, particularly through natural areas
- the development of a 'recreation library' that would provide equipment such as netballs, basketballs, tennis racquets, etc
- improvements to the dam facilities
- shade at seating at various locations around town
- the development of a motorbike track
- the development of a youth space with pool tables, games, etc
- the development of a skate park.

Also identified was the need to assist sporting clubs with management issues, mainly due to lack of committee members.

Second Community Meetings

The follow-up community meetings held in both towns addressed more specific issues, particularly related to existing and future facilities and programs.

Blackall

Facilities

The following is a summary of the main outcomes in regard to existing and future facilities for Blackall. It should be noted that almost 75% of attendees were youth.

Aquatic Centre: People were generally happy with the existing aquatic centre but identified the need for retractable shade structures and diving boards, and that the pool had a significant leak.

Showgrounds: The main football field needs significant upgrades and the site in general needs improved signage and storage.

Skate Park: Needs expansion to make more challenging and edges are currently dangerous. A drinking fountain and a path leading to it would also be appreciated, as would improved lighting. It was also thought that a play area for young children and a barbecue/picnic area with tables and seats would cater better for families.

Youth Centre: The Memorial Hall is perfectly located, in the centre of Town and adjacent to the skate park, to house a desperately needed youth centre.

Fitness Trail: It was thought that the development of a fitness trail, with outdoor fitness equipment, would be a great development and would be ideally located near the Barcoo River.

Walking Trails: Although no specific locations were raised by attendees, general suggestions were made in regard to the development of walking trails in the area. These included adequate lighting, networking with existing locations such as the Showgrounds and Ram Park, directional and information signage, and ensuring they are also suitable for bicycle use.

There was also general discussion about existing facilities that were under-utilised such as the climbing tower and the netball courts. It was suggested that the netball courts may be better used if altered to cater for basketball and there was also interest in re-opening the cinema. Another suggestion involved the creation of a community register that would detail the equipment owned by every club so that the sharing of this equipment could be facilitated.

Programs

The group identified several programs they thought would provide improved sport and recreation services to the area. These included:

- walking groups to utilise any developed walking trails
- aqua aerobics and similar
- laser skirmish
- courses for accreditation for coaches, administration officers, etc
- 'boot camps' or similar
- access to grant writers for assistance in obtaining external funding.

General

When asked for general wants and needs, the group identified the following:

- more shade for facilities across the region
- work with the schools to develop an indoor facility
- a coordinator for sporting groups, possibly a Council trainee
- a gymnasium staffed by a qualified instructor
- youth centre
- improved transport options
- reduced fees for facility and bus hire for community groups.

Tambo

Facilities

When asked for specific facility needs and wants, the responses are summarised as follows.

Walk/Cycle Paths: the development of paths that would cater for pedestrians and cyclists and link key areas of town included the aged care facility, the hospital, shops and the dam. The path at Longreach joining the airport to the centre of town was noted as a great example of how attractive and functional such a facility can be.

EE Parr Park: More trees, shade and picnic facilities, ideally located near the playgrounds, were identified as necessary, as was fencing around the play equipment. It was also thought that the development of areas for both older children/youth and toddlers would create better experiences for families. Improvements to the grassed area and existing signage was also mentioned, and the need for more water bubblers.

Aquatic Centre: A range of ancillary facilities was identified as additions that would greatly add to the existing centre. These included

outdoor games such as pool tables, air hockey and table tennis. It was also noted that pool blankets and solar heating would allow the pool to be open for an extended swim season.

Tambo Dam: Improvements to the beach volleyball facility at the end was considered necessary.

Scrubby Creek Sports Club: Minor improvements that are desired include the purchase of table tennis equipment, an upgrade to the tennis courts and the lighting required to host night shoots.

Programs

Suggested new or improved programs that would benefit the community included:

- training courses for people to gain the required accreditation to deliver programs
- aqua aerobics
- walking groups/activities
- dance/gymnastics
- 'dive-in' or outdoor movies.

General

General needs and wants identified by attendees included:

- development of a community vegetable garden
- better utilisation of the facilities at the race course
- establishment of a gym - with qualified trainer
- extension of the dam to allow skiing, etc
- general improvements to playgrounds and the installation of outdoor fitness equipment.

School Principals

Principals are often a valuable source of information due to their high level of contact with children and the community in general. Further, significant sport and recreation facility developments are currently occurring at both of the Blackall schools. Subsequently, personal interviews were held with the three principals of the schools in the region.

Blackall State School

The school's main focus at the moment is completing the design of a new indoor facility (funding secured). The Principal intends making the facility available to the community and at this stage, it is anticipated that the facility will have two courts and cater for the sports of basketball, volleyball and netball. Other features that are hoped to be included are a movable stage, dance room, classroom, and it is hoped that the current air conditioning from the pre-school will be relocated to the new facility.

The facility is to be located on the existing grass netball courts and will have a cooled water tank and an external basketball hoop and tennis hitting wall. It should be noted that a gym is on the 'wish list', but may have to be excluded due to the available space and funding. It was noted however, that if a gym is developed at or near the aquatic centre, the school would only need access to it during one school term each year.

St Joseph's Catholic Primary School

Similar to Blackall State School, St Joseph's is currently focussed on the development of an indoor multi-purpose centre, in addition to the redevelopment of its outdoor sporting fields.

Anticipated to be fully enclosed, the indoor facility will contain one court and be marked to cater for basketball, netball and half-court tennis. It is expected to be used for basketball competition, but at this stage, not netball.

The outdoor fields have been re-aligned and resurfaced, resulting in a cricket field with a new synthetic grass cricket pitch and a full size football field. The cricket practice nets are also being upgraded.

Tambo State School

Discussions with the Tambo Principal focussed more on issues facing the delivery of sport and recreation in Tambo, not specific facility developments at the school that may be accessible by the community.

Community/family issues

It was noted that while Tambo is very close-knit community, there is limited leadership in developing opportunities, especially in sport and recreation. That is, if asked to help, most residents will, but they need to be directed.

It was also noted that it is difficult for teachers to get the right balance between work and being an active community member, while still maintaining their role as a teacher, and hence, community leader.

It is also a fear that the community is going to lose more and more of the youth in the future.

Sport and recreation issues

It is believed that sporting clubs need to be careful not to be seen as groups that rely too heavily on funds from the Town people, without giving back to the community. They also need to be mindful that children are their future members and therefore can't be perceived as not wanting to have children involved.

General issues/observations

There needs to be an increase in activities for youth, including an inviting meeting place where they can meet regularly. Currently, the school coordinates a variety of groups including Active After School, and Games, Chess and Guitar Clubs. These clubs interact with the Senior Citizens group wherever possible.

Additional Consultation

Youth

Informal meetings were arranged with groups of teenagers in both Blackall and Tambo to discuss their ideas on the provision of sport and recreation in the region.

Blackall

The most pressing issue identified by the youth of Blackall was the establishment of a youth centre in the Memorial Hall. This facility would need to be supervised and is perfectly located adjacent to the skate park and central to the Town. The Centre could also act as a central location where equipment for a variety of activities (laser skirmish, sporting equipment, etc) could be stored and managed.

There was also discussion regarding the possible re-opening of the cinema but it is understood that this will be a business decision by the owner. A high level of need would have to be demonstrated due to the costs involved.

Other activities identified included dances/socials, abseiling/rock climbing, water polo or other 'wet' activities, and laser skirmish.

Tambo

The teenagers in Tambo would like to see the pool open for longer (both the season and daily hours), possibly by installing a heating system. They would also like to see the installation of more

exciting facilities such as diving boards.

They identified that youth activities could be based in or near the sports club, due to its location near the pool, and believe that a small skate park would also be popular. Adventure equipment (flying foxes, climbing, etc) should also be incorporated into future playground developments.

The dam is a popular facility but they would like to see some improvements such as canoes/kayaks being available, volleyball posts installed, and general improvements to make the site attractive (including stocking the dam with fish).

Activities that the teenagers would like the opportunity to participate in included day trips/excursions (fishing, camping, etc), bands, outdoor adventure activities such as bungee jumping and abseiling, and socials with Blackall and other towns (Blue Light Discos too young). They would also like to see the Stock Show developed into more of a carnival, with more rides and similar attractions.

Parents

A group of interested parents in Tambo were interviewed to identify issues that constrained their families from accessing sport and recreation opportunities and to discuss possible solutions.

A common issue that was identified not only during this forum, but in many discussions with other stakeholders, was the need for appropriately enclosed play areas for young children. Many parents did not participate in a range of activities as they usually had toddlers in their care and could not leave them unsupervised.

Providing experiences for the full range of ages within playgrounds was also identified as an issue, especially for the very young (toddlers) and the older children (teenagers). It was also thought that a 'hang out' space with tables seats and shade should be incorporated into the Clay Pan, an area already popular with teenagers.

It was thought that the installation of outdoor fitness equipment at the dam would be popular; and that it should be connected via a concrete path to the centre of Town.

Activities that were believed would prove popular included gymnastics, dance, martial arts, adventure activities and camp outs (possibly coordinated by the SES Cadets), and creative workshops.

Older Adults

Discussions were held with the 60's and Better Group in Blackall and the Senior Citizens in Tambo to investigate any relevant issues affecting older residents of the region.

The main outcomes of these discussions are as follows:

- a body of permanent water similar to the Tambo dam is needed in Blackall
- extend the Tambo dam to allow activities like water skiing
- both areas need designated walking trails (including bird watching and fitness trails) which should be appropriately signed and wheelchair friendly
- any walking paths should be usable in wet weather
- Banks Park is a great asset that would be improved by upgrading the lighting to allow evening activities
- a bigger spa at the Blackall Aquatic Centre would cater better for locals during tourist season
- aqua aerobics would be popular at both pools, as would massage and physiotherapy.

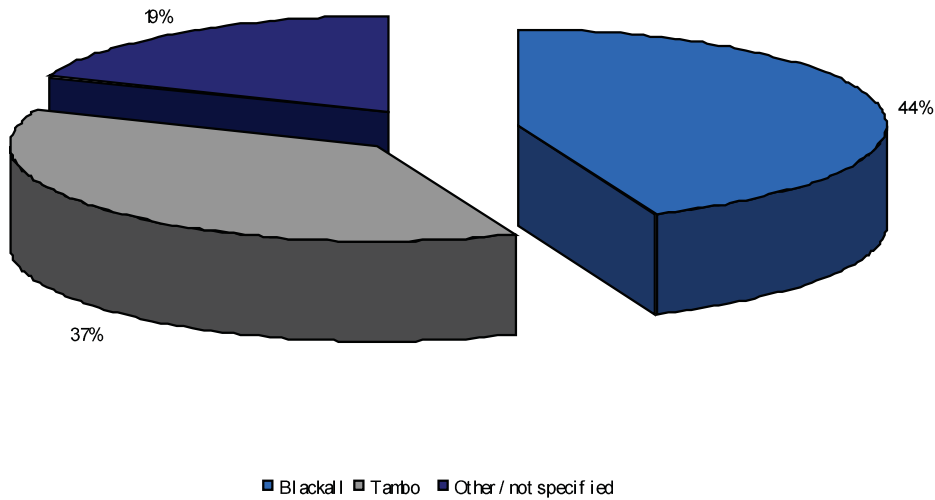
Community Survey

A community survey was delivered to every household in the Blackall Tambo local government area (approximately 1,000 households). The survey asked respondents their views of the provision of sport and recreation facilities and programs in the region as well as their satisfaction with parks and reserves, and sport and recreation.

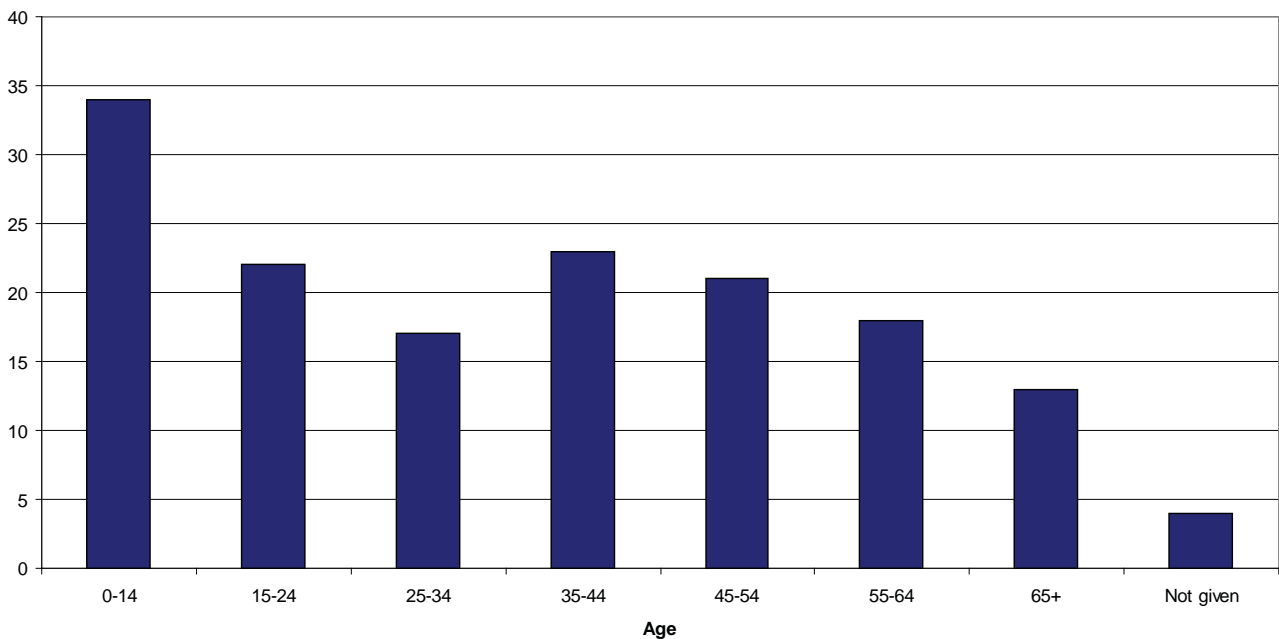
A total of 52 usable surveys were returned. This is not sufficient for any statistically valid reporting so the information should not be relied upon too heavily for any planning or capital expenditure. However, it does represent the views of 52 households that have an interest in sport and recreation in Blackall Tambo.

The distribution of respondent's places of residence and age distribution are illustrated below. It should be noted that responses included the opinions of all people living within the one household.

Respondent's places of residence:

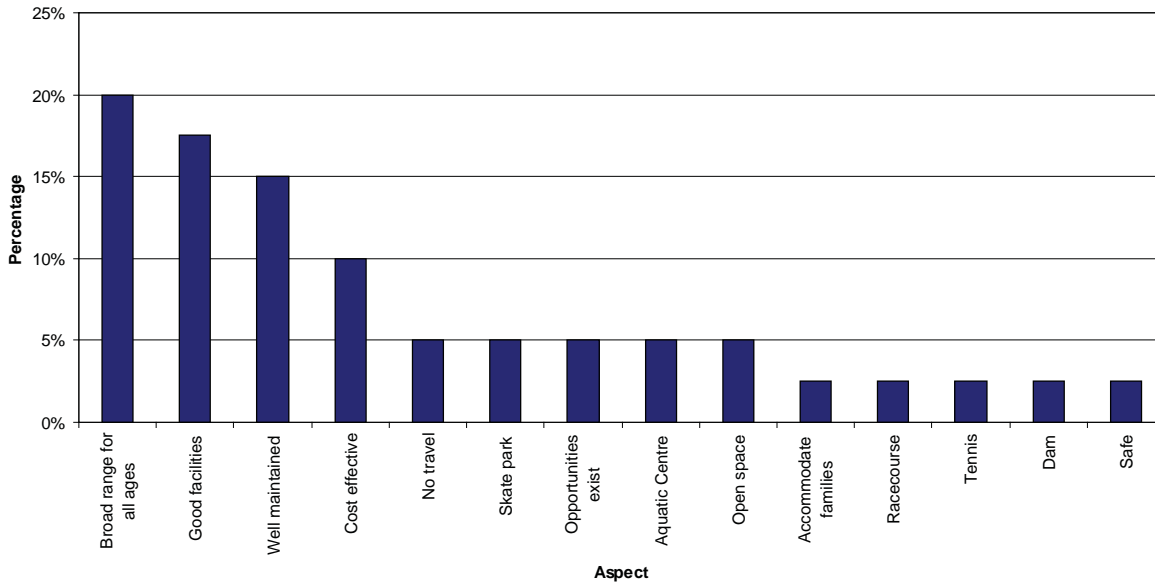


Respondent's age distribution:



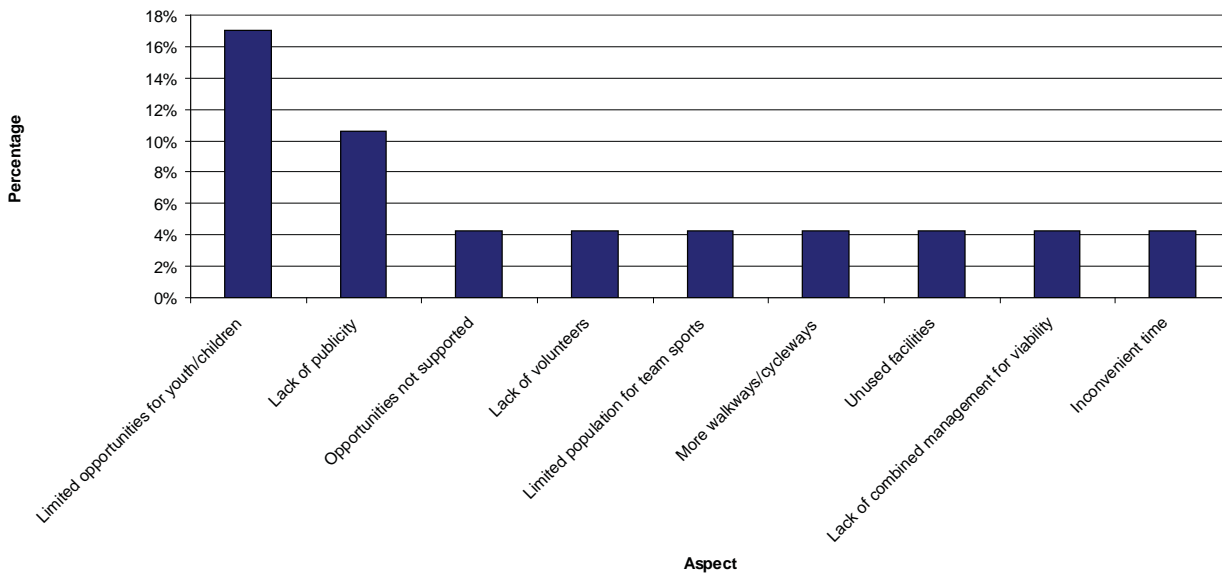
Question 1 asked respondents what they liked about sport and recreation in the region. The dominant theme that came through these answers was the variety of sports available, the good quality and well maintained facilities, and their reasonable cost. Figure 3 illustrates the most popular responses.

Figure 3: Liked aspects of sport and recreation



Question 2 was the opposite of Question 1 and asked people what they did not like about sport and recreation in the region. The two biggest responses to this question were the limited opportunities for youth/children and the lack of publicity of opportunities in general. Figure 4 illustrates the most frequent responses.

Figure 4: Disliked aspects of sport and recreation



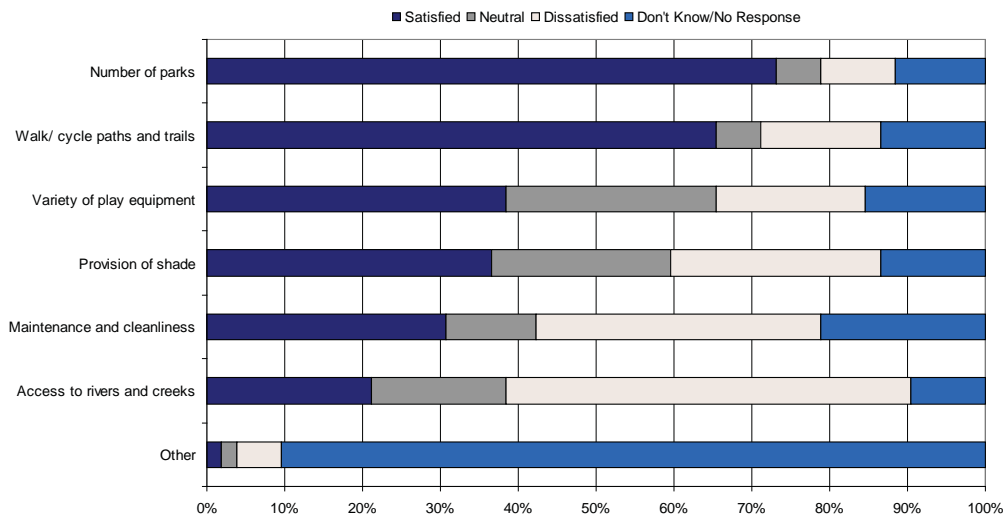
Question 3 asked “what changes, new facilities or programs would you like to see to improve sport and recreation in the region?”

The most popular responses to this question included:

- more facilities for youth and children (including skate park and bmx facilities)
- an operational gym
- improvements/construction of dam/lake
- more walkways
- shade at both aquatic centres and heating the Tambo pool.

Question 4 asked households to rate their satisfaction (from satisfied to dissatisfied) with various aspects of parks and recreation. The results are shown in Figure 5.

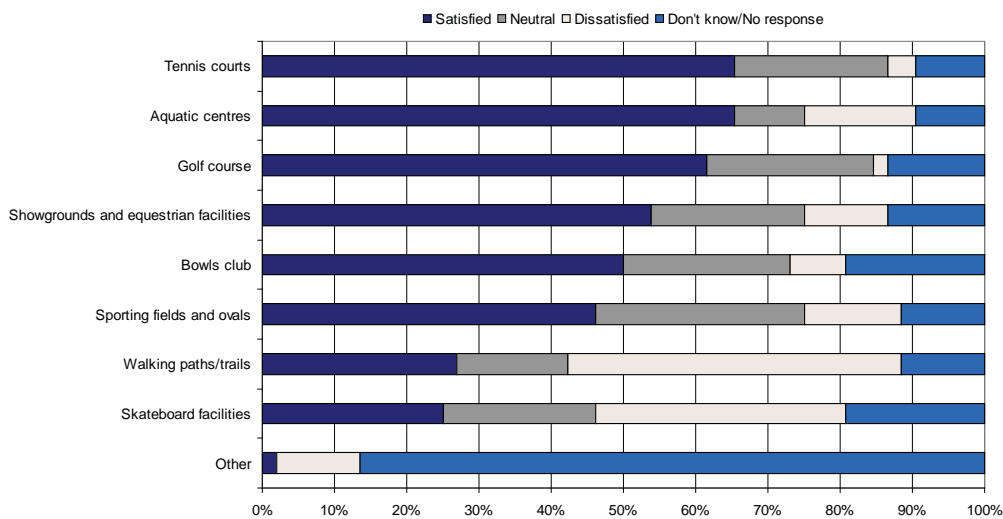
Figure 5: Satisfaction with parks and reserves



As illustrated, there is a high level of satisfaction with the number of parks and the quality of existing pathways. There is however, an indication that Council should consider increasing its maintenance of parks and possibly investigate better access to waterways.

Question 5 asked respondents how satisfied their households were with a range of community, sport and recreation facilities (see Figure 6).

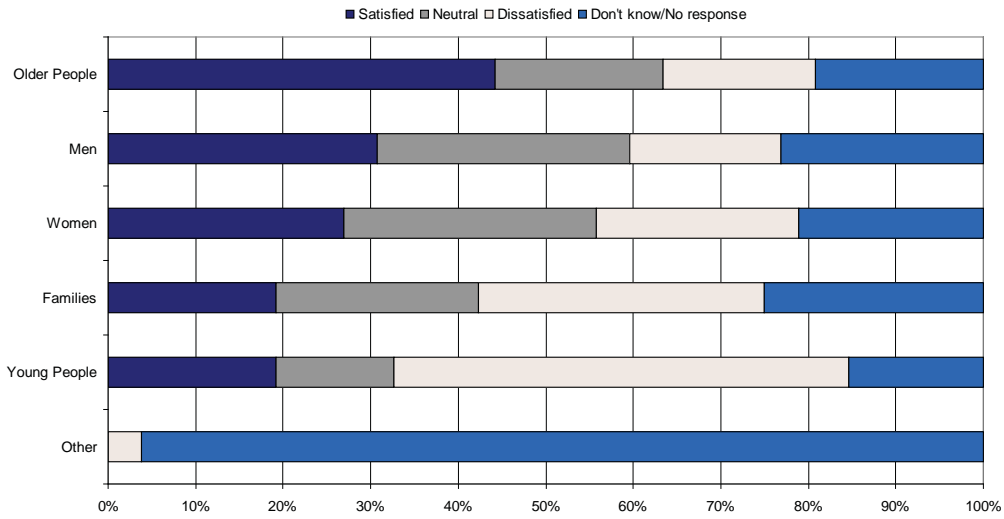
Figure 6: Satisfaction with a range of community, sport and recreation facilities



Respondents were most happy with the tennis courts, aquatic centres, golf courses, showgrounds, bowls clubs and sporting fields. There was some dissatisfaction with walk/cycle paths and, based on other consultation, it is assumed this was related to quantity, not quality.

Question 6 asked how happy the household was with the range of sport and recreation activities and programs. Figure 7 outlines the top responses to this question.

Figure 7: Satisfaction with the range of sport and recreation activities and programs



SPORT AND
RECREATION
FACILITIES

SECTION

4

This section provides a snapshot of existing sport and recreation facilities in the Blackall Tambo Region, providing an analysis of their current status and identification of relevant issues and opportunities for each.

More detailed information on the tenant organisations has been provided in the previous section.

Generally, existing facilities are in good condition but there are several across the region that are aging and, as a result, will require upgrades in the near future.



Blackall Facilities

Blackall Aquatic Centre

Current Situation

In general, the Aquatic Centre is a high quality facility, extremely popular with local residents and tourists, especially the large number of 'grey nomads' during peak tourist season.

Naturally heated by accessing water from the artesian basin, the pool provides year-round swimming opportunities.

The Centre boasts a free-form pool with a mix of beach and straight edge entries and 6 x 50m lanes through its centre, a small spa, a small toddler's pool and ancillary facilities such as an amenities block, officials shed, club/equipment store, shade structures and open, grassy surrounds.

All facilities are in good condition, with the exception of the shell of the main pool. Due to the highly reactive soil, a large crack exists across the middle of the shell, resulting in a high volume of water being lost.

The Centre is located adjacent to the Showgrounds where most of the Town's sporting facilities are located. There are, however, limited links to these complementary facilities.

Issues and Opportunities

Although already a high quality facility, there are several issues that could be addressed to increase the effectiveness of the facility in delivering quality sport and recreation outcomes.

The leak in the main pool's shell will need to be addressed, starting with a detailed investigation by a suitably qualified and experienced expert. If repairs to the shell are not viable, planning should commence for the replacement of the existing shell.

There is a great opportunity to improved the facility's linkages with the adjacent showgrounds, creating a major sport and recreation precinct for the Town. These linkages will also incorporate the Town centre via proposed walking paths.

The manager of the Centre has also identified the need to investigate a larger spa pool, mainly due to its popularity. He also identified the need for the pool to have access to cold water for filling purposes as, during summer, the artesian water can raise the pool water temperature to an uncomfortable level.



Blackall Bowls Club

Current Situation

Located on the highway at the western entry to Blackall, the Bowls Club is an attractive facility, well used by local residents.

The large green is in good condition, as are the ancillary facilities such as bench seats and shade structures.

The clubhouse is in fair condition and is relatively large, able to cater for club and other social events such as parties. Minor upgrades would greatly improve the building's appearance and functionality.

Issues and Opportunities

The club has identified that its existing fridges are in poor condition and need replacing as soon as possible.

The site's entrance could be upgraded to be more enticing, especially considering its prominent location. Other aesthetic upgrades would also increase the facility's appeal.

Other required improvements identified by the Club include replacing the green with a 32m x 32m synthetic grass green (less maintenance), more shade around the green, a new storage shed, a switchboard upgrade, and improved signage.

Greater promotion of the club and its facilities and services could be undertaken, especially in regard to the high number of grey nomads that visit Blackall.



Blackall Golf Club

Current Situation

Located on the highway on the western edge of town, the Golf Club is an attractive facility and well maintained.

The clubhouse was recently raised and re-stumped and more recently, a significant access ramp for people with mobility difficulties was added.

Issues and Opportunities

As with the Bowls Club, there are opportunities for the club to take advantage of the high number of grey nomads that visit Blackall. A cooperative approach to this issue may maximise the benefits to both clubs.

Areas identified that require improvements include the back perimeter fence, a new cold room, water tanks for cold water to the clubhouse, a storage shed for buggies, and irrigation systems around the course and clubhouse.



Blackall Pistol Club

Current Situation

The Pistol Club is a well maintained facility, co-located with the Clay Target Club just outside of town.

Facilities include an indoor air pistol range and two outdoor ranges, one of which is extendable to 50m (ISSF Standard).

Issues and Opportunities

Only minor improvements are needed to address some operational issues for the club. These include upgrading the storage shed (and Secretary accommodation), the lighting in the indoor range, and the spinning targets on the second range.



Blackall Clay Target Club

Current Situation

Although the existing facilities are accepted by the current membership, they are basic and in need of upgrading.

The club has a good relationship with its neighbour, the Pistol Club, and as result, the grounds are well maintained,

Issues and Opportunities

The Club needs two additional traps to be able to host two-day shoots, including new 'phonos' for all traps. Further, the existing clubhouse and kitchen facilities need upgrades to be able to host events and to better serve members in general. The upgrade to the clubhouse would involve extending the building and incorporating a kitchen, office and store room, with the existing concrete reinforcing panels to be replaced by roller doors.

Another issue affecting the club's development is the lack of suitably trained volunteers.



Blackall Pony Club

Current Situation

Although a fair way out of Town, the Club believes this adds to its appeal as participants can have an enjoyable ride to the site. It also provides vast areas for its activities, evidenced by the size of the paddocks available to the club.

The facilities are well maintained but would benefit from minor improvements.

Issues and Opportunities

The club would like to enclose its existing main shed and include toilets, showers and a canteen. This will allow the club to host bigger events and improve facilities for its members, including improved child minding. A new storage shed and water supply has also been identified as desired improvements, as has a paddock at the rear of the site for horse agistment.



Barcoo Amateur Race Club

Current Situation

A popular facility, located just on the outskirts of town that hosts at least 5 race days each year.

While a functional facility, there is a need to undertake major improvements to the kitchen, main betting area, and bar. It is unlikely that the existing facilities would meet health regulations.

Issues and Opportunities

Improvements including a new kitchen, toilets, shade structure/s and bar area would greatly improve the facility and make it a more attractive option for functions other than race days. The level above the bar could be retained with minor renovations.

In the longer term, there is a need to add an outside rail to the track to full meet Queensland Racing's requirements.

Other desired improvements include cool water for the wash-down area, improved signage, seating, lighting, shade and general landscaping. A dedicated child play area would also be beneficial. Upgrades are also planned for the horse swim facility and the judge's stand.



Blackall Showgrounds

Current Situation

Located on the eastern edge of Town, the showground site is attractive and well maintained, with sport and recreation facilities that cater for rugby league, netball, tennis, campdraft and rodeo, Guides, and of course, the Show itself.

Issue and Opportunities

There are a range of aesthetic and functional improvements that would greatly benefit the site and these are described in detail in the concept master plan in Section 6.



Could be upgraded as a multi-purpose building catering to activities such as choir, yoga, dance and fitness classes

Blackall Rugby League (Junior and Senior)

Current Situation

Located within the Showgrounds site, both the Junior and Senior clubs have access to both a small 'clubhouse' facility (essentially change rooms and storage) and the new multi-purpose building located to the west of the field. Considering the current drought conditions, the field is in fair condition.

The seniors are currently inactive (except for ad-hoc social games) with the juniors currently fielding several teams.

Issues and Opportunities

Depending on the implementation of the concept plan for the showgrounds site, the rugby league may be better served by operating more from an extended and relocated new main clubhouse/catering facility. The other obvious improvement would be to increase field maintenance including items such as mowing, fertilising and aeration, and the installation of an automatic irrigation system.



Blackall Netball Association

Current Situation

The netball courts within the showgrounds are currently not being regularly used by the Association. It is hoped that numbers will again increase to rectify this.

The courts themselves need repairs, especially the court closest to the clubhouse, which has subsided in an area, resulting in an uneven surface. Apart from this, the surfaces are in fair condition, however, the run-off area does not seem sufficient, especially in relation to at least one light pole.

Issues and Opportunities

There are limited opportunities for female sport and recreation in the region. As such, it is important for popular pastimes such as netball to be promoted as much as possible. With the showgrounds being master planned, it is an opportunity to identify the required improvements and ensure the facility is linked to the others in the Town's sports precinct.



Blackall Tennis Association

Current Situation

Located in the south eastern corner of the Showgrounds area, the tennis facilities are neat, tidy, well presented and well used. The clubhouse is highly functional and well maintained, while the six 'flexipave' courts are in good condition.

Issues and Opportunities

There are opportunities for improved linkages with the other sport and recreation facilities within the Showgrounds precinct and increased promotion of the tennis facilities through improved signage.

There may also be opportunities to develop a 'store' of equipment, especially racquets, that could be lent or hired to potential users.

Identified improvements include disabled access to the clubhouse, repairs to the cracks in courts surfaces, new hitting wall, fencing between courts, shade cloth wind barriers and an automatic irrigation system.



Blackall Campdraft/Rodeo

Current Situation

The Campdraft Association is currently preparing to host the 2010 National Titles. Improvements are being made to existing facilities for this event, both to the arena and ancillary facilities.

Issues and Opportunities

There are concerns that following the intense build-up for the Nationals, members may lose interest and the Association may suffer a decline in membership/participation.

The Nationals are however, a perfect opportunity for the Association to improve their existing facilities and to heavily promote their organisation. Identified improvements included permanent stock yards, increased camping facilities, improved watering facilities, and a range of other minor constructions and purchases.



Climbing Tower

This facility is currently not accessible by the public due to a lack of qualified staff to operate it.

Visual inspections indicate that the structure would only need minor repairs to make it usable, however, a more significant issue is its current location. It is suggested that the facility would be better located within, or immediately adjacent to, the aquatic centre.



Skate Facility

A completely covered, high quality facility located immediately behind the old Town Hall. The facility is surrounded by open grassed areas with good shade trees and a covered picnic table immediately adjacent.

There is an opportunity for a Youth Centre to be developed within the Town Hall building that would be perfectly located near such an attractor as a skate facility, all within the centre of Town. The open areas surrounding the facilities would also be able to cater to a range of outdoor activities, complemented by the indoor activities able to be held in the Hall.



Tambo Facilities

Tambo Campdraft Association

Current Situation

A highly functional and well maintained facility located adjacent to the rugby league, pony club and polocrosse facilities, on the main highway at the western end of Town.

Tenants of the site effectively operate separately with limited links between facilities.

Issues and Opportunities

Negotiations are currently underway regarding the possible relocation of the main polocrosse field to the campdraft arena. This, in conjunction with the new building due to be erected at the site, will create a precinct with a central hub.

There are also opportunities to make minor improvements to other built facilities, including the completion of the arena perimeter fence, once the polocrosse field issue is decided.



Tambo Polocrosse

Current Situation

Located immediately west of the campdraft arena, the polocrosse facilities are basic but meet the needs of the Tambo Association. In addition to the built facilities between the two fields, an amenities block is also located at the southern end of the site.

Issues and Opportunities

As above, there is the opportunity for the Association to relocate its main field to the campdraft arena.

Due to its visibility from the highway, there are also opportunities to increase the promotion of the site.



Tambo Pony Club

Current Situation

Immediately south of the rugby league field and south east of the camp draft arena, the pony club facilities are in good condition.

Issues and Opportunities

Not visible from the highway, increased promotion of the facility could be achieved through improved site signage, especially at the highway entrance.

Minor improvements could be made to the 'clubhouse' and increased spectator facilities would also be beneficial. Other identified improvements include a unisex toilet and change room, a dressage area, a trailer for moving equipment around, a power supply upgrade (3 phase not necessary) and access to a mobile cold room (available to all Tambo clubs).

The Club supports the idea of the new building and is happy with its proposed location.



Tambo Rugby League

Current Situation

Located adjacent to the Pony Club and Campdraft, the Club's single field is visible from the highway. The dressing rooms are in poor condition and the field is need of increased maintenance.

Issues and Opportunities

With the construction of the new building in the precinct, there may be opportunities to utilise its facilities and to renovate existing ancillary facilities.

There is also the opportunity to increase the promotion of the site through improved signage.



Tambo Golf Club

Current Status

Located outside of Town, the 18 hole golf course is a popular facility and well maintained.

The clubhouse is in good condition and is hired for social function functions. The availability of a community bus for such functions adds to the facility's popularity.

Issues and Opportunities

Minor improvements have been identified by the club, both to the course and clubhouse. These include tree plantings, improved irrigation, minor improvements to inside the clubhouse, increased shade off the existing veranda and additional motorised carts. They would also like to install outdoor toilets on the course, possibly at the 6th and 12th holes.

The club has a very cooperative relationship with Council and hopes to maintain this.



Tambo Race Club

Current Status

With a recently added amenities block, this facility is in excellent condition and caters for not only the race meets held, but also the Tambo Stock Show and Clay Target Club.

Issues and Opportunities

Tambo recently lost two of its annual races and now only hosts 2 race meets a year, significantly impacting an annual revenues. The club believes that increasing the number of trainers based at their facility will increase their chances of being allocated more race meets.



Tambo Clay Target Club

Current Situation

Co-located with the Race Club and Stock Show just out of Town, the Clay Target Club enjoys well maintained and attractive facilities.

Three traps are located within the main arena, with space available for expansion.

Issues and Opportunities

The club are keen to build another trap to give them a total of four and to increase the amount of powered camp sites for bigger events (also to be used by Stock Show).

Signage is also needed to increase the promotion of the club while other minor improvements include shade, lighting upgrades and the purchase of a laptop computer and associated software to assist event management.



Tambo Stock Show

Current Situation

The annual Stock Show enjoys a good relationship with the other tenants of the site and caters to approximately 600 people each year. The Show uses most of the site with displays, events and rides being located within the race track in the main arena.

Issues and Opportunities

The issues identified by the Stock Show are focussed on facility improvements that are required. These include the need for portable shade structures, floodlights around the site, a new catwalk, extensions to the cattle yards and a mobile cold room and freezer for catering.



Tambo Aquatic Centre

Current Situation

Co-located with the Tambo Sports Club on the southern edge of Town, the aquatic centre is an attractive facility with a 25m 6 lane pool and a smaller learn-to-swim/toddler's pool.

The surrounds include small grassed areas, an amenities block, shade structures (mainly large umbrellas) and a general purpose 'storage' building.

Issues and Opportunities

Several minor improvements have been suggested by the Swim Club and the lessee including more seating and shade, extension of the existing soil mound, irrigation and a storage shed to enable separation of club and pool equipment.

There may be an opportunity to incorporate either a thermal blanket or solar water heating equipment to extend the operating hours and season, while pool cleaning equipment and chlorination systems could be upgraded.

The main opportunity for the Centre however, is improving its links with the existing sports club and a possible youth activity centre so as to create a significant sport and recreation precinct for Tambo.



Tambo Sports Club

The Sports Club offers several sports and activities to the Tambo community including lawn bowls, tennis, netball, 'indoor' cricket and various activities from within the main clubhouse.

The clubhouse has a generous veranda for viewing activities and there is space available for the extension/addition of buildings.



Lawn Bowls

The lawn bowls facility is attractive and well used, but the artificial grass surface is in need of replacement.

The retractable shade around three of the four sides could be complemented with larger shade structures along the fourth side, if it didn't restrict club operations.



Tennis Courts

Also with artificial grass as the surface, the tennis courts are configured to also accommodate netball and 'indoor' cricket.

The court surfaces are in sound condition, as are the nets and fences.



General Site Observations

There is a great opportunity for the sports club to be better linked with the aquatic centre, and for other improvements to be made, to create a sport and recreation precinct catering to all ages within the community.

Improvements could include:

- construction of a common, shaded playground
- clubhouse kitchen and bar upgrade
- clubhouse extension/s to allow the provision of more storage, better viewing areas and defined areas for user groups
- development of a youth 'centre' incorporating both indoor and outdoor activity areas
- relocating the existing playgroup to the 'precinct'.

The development of adjacent outdoor areas will provide the additional space required for the creation of this precinct. These areas include the existing car park (not essential due to on-street parking available) and the small grassed area immediately north of the aquatic centre. The linear grassed area immediately north of the tennis courts could also be used as an entry point to the precinct and incorporate basic skate facilities along a concrete access path.



Area north of aquatic centre



Area north of tennis courts

Tambo Lake

This attraction is a popular recreation area for locals and tourists alike. Located at the north eastern corner of Town, this artificial lake has potential to be developed into an even more significant feature.

There is basic park furniture, electric barbecues, shaded picnic tables, a beach volleyball court and open, grassed areas.

Opportunities for the development of the site include a walkway around the lake's perimeter that would also be linked with existing and future walkways around Town, and a strong connection to the Coolibah Walk. It should be noted however, that the perimeter path would require a boardwalk structure across the low-lying area to the east.



Another possible development would be the installation of fitness stations in one section of the park overlooking the lake. These facilities are often located along pathways within Parks but this format dictates to the users in which order they should use the equipment. A better option is locating the stations in a group (aesthetically positioned) where users can access the equipment in the order they choose.



Scrubby Creek Sports Club

Current Status

Approximately 135km by road south-west from Tambo and 170km by road almost due south from Blackall, this facility provides valuable sport and recreation opportunities to people living significant distances from both Towns.

Offering the sports of tennis, golf, cricket and clay target shooting, the club is highly self-sufficient with its only revenue source being bar takings at events.

Issues and Opportunities

Various minor improvements are needed, including upgrades to at least two of the traps, repairs to the tennis court fencing, more seats and tables, air conditioning for the main building, concreting the bar floor, power banks for camp sites, a basic children's playground, additional water tank/s and the purchase of 'mushroom' gas heaters for the cooler months.



Parks

Although there is not a large number of parks in either Blackall or Tambo, this is not a significant issue in the region due to the size of the Towns and the nature of rural living.

More important issues to address in the provision of parks to the community is improving their grass cover, aesthetics, functionality, and the quality and range of facilities such as play grounds, seating and shade.

Blackall Parks

Banks Park

Located just west of the centre of Town on the main highway, Banks Park is Blackall's premier park, offering playgrounds and picnic areas, seating, and open grassed areas.

Shade in the Park is a mix of built and natural and there is a pleasant aesthetic to the site. There is 'safety' lighting to some areas and a complete perimeter fence, with no internal fencing.



'Ram' Park

Just west of Banks Park along the highway, Ram Park is more a tourist park than a recreation site for local residents.

Featuring the statue of the ram, picnic tables and other seats, and historic monuments (including the adjacent train station), there is limited open space within the site.



Memorial Park

Set on the main highway, adjacent to the Cultural Centre, this is a well maintained and attractive park, suited for passive recreation for residents and visitors alike.

Trees provide some shading over seats, resulting in the park being popular for resting and reflection.



Tambo

EE Parr Park

The only open space in Tambo formally recognised as a park, EE Parr Park contains an amenities block and a large, half-shaded playground to wards the rear.

The Park is well maintained with some picnic tables and seats, shaded by mature trees, along its long edge. However, the Park suffers from limited road frontage to the highway, and is not especially inviting to passing traffic. The welcoming nature and usable space of the Park will be improved by the removal of the memorial artillery at the front, with the future site understood to be a memorial precinct at the Tambo Shire Hall.

Funding has been recently obtained for upgrading the site with Council staff receiving suggestions from the community during the consultation phase of this Sport and Recreation Plan.

It should be noted that other locations within Tambo, such as the football field, school grounds and dam area also act as parks in the Town.



Pathways

Pedestrian/Cycleway Background Information and Trends

The main barriers that prevent people from participating in walking and cycling include:

- lack of connections/linkages between streets and open spaces
- lack of pathways within parks, open spaces and streets
- isolated parks and open spaces where people feel unsafe
- parks and open spaces lacking aesthetic appeal
- poor quality pathways and roads that are poorly maintained
- lack of facilities (toilets, seats, shade, drinking water, parking) provided in parks and along pedestrian/cycle paths
- heavy traffic with limited or no pedestrian and cycle crossings
- lack of on-road bicycle lanes and unsafe road conditions.

Blackall Tambo Regional Council should aim at developing the proposed pathway systems as outlined in the following pages to address these barriers. It should be noted that wherever possible, paths should be developed to be all-weather (concrete) and wide enough to cater for a range of users including pedestrians, people in wheelchairs/mobility scooters, bicycles, scooters and those with other general mobility issues.

Other inclusions when developing a path network include shaded seats at regular intervals, water taps/bubblers and both directional and informative signage.

Tambo

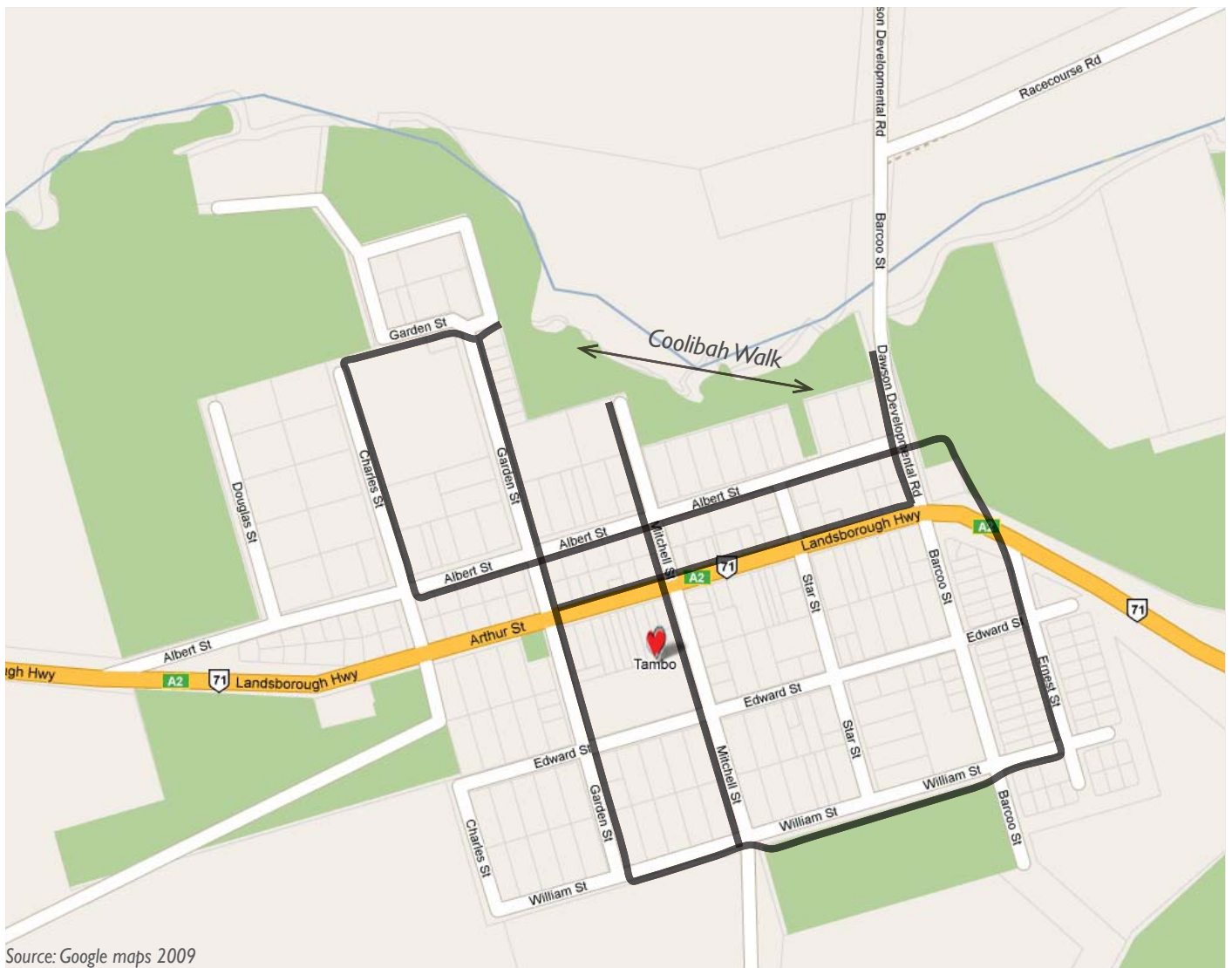
Indicated below is the proposed future walk/cycle path network within Tambo. The proposed network includes some existing paths.

The network will be approximately 5.8km in total distance when complete and will offer users a range of distance options, depending on which loop is chosen.

The main features include:

- connecting main features such as the dam, sports club, main street/shops, the school, the Coolibah Walk and the Aquatic Centre
- signage should be included to inform users of where the paths go, and the distances they will be walking
- most paths being concrete, except for the southern section between Mitchell and Barcoo Streets (along grassed and treed area of William Street) - to be gravel.

It should also be noted that a gravel pathway around the perimeter of the dam should also be investigated, however, it may be necessary to include a boardwalk section through the lower, flood affected eastern aspect to complete the loop.



Source: Google maps 2009

Blackall

The proposed future path network for Blackall is illustrated below.

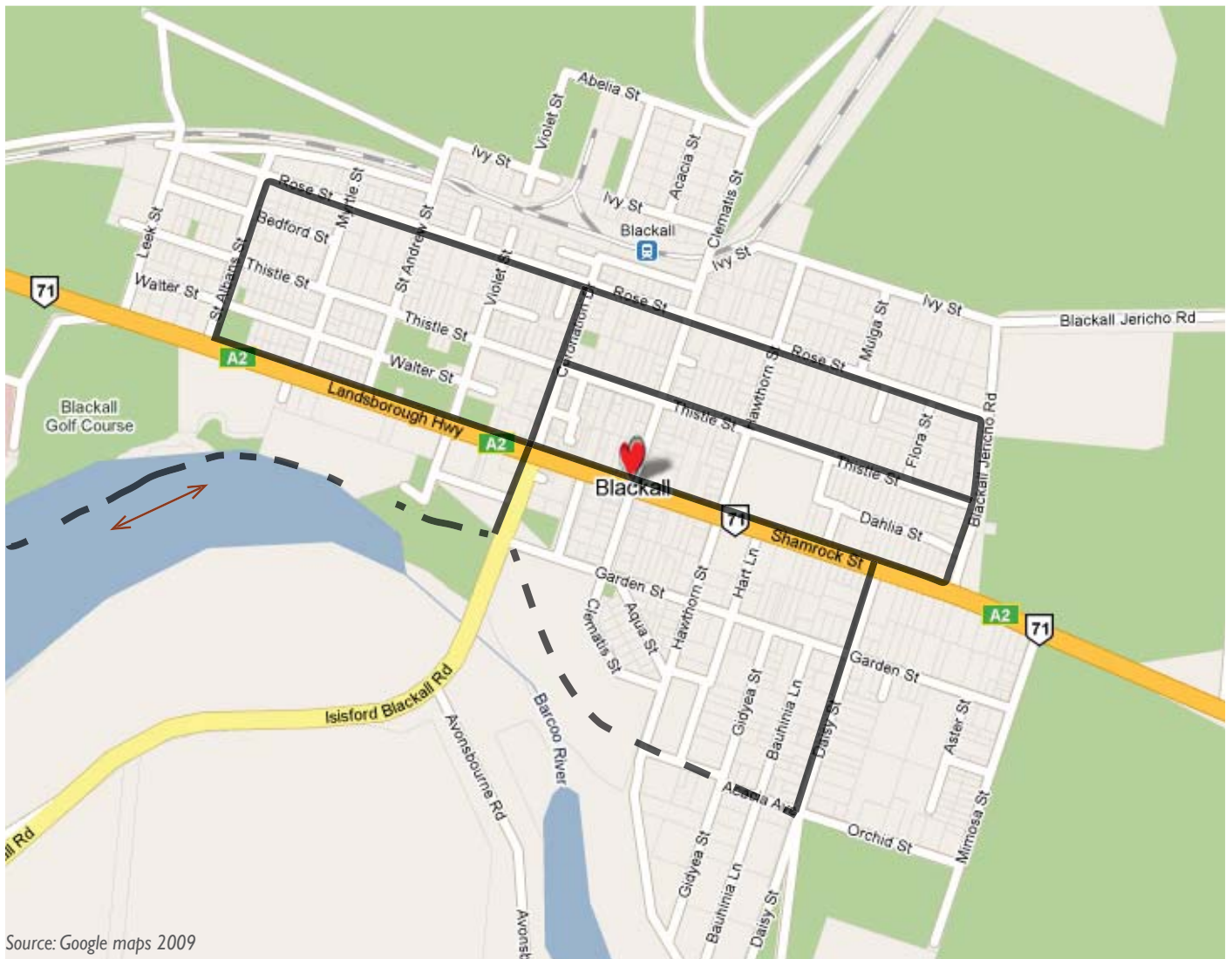
It contains some existing paths and will create several loops that offer users different options in regard to the distances they wish to travel and the sites they like to see.

Most paths are proposed to be concrete, providing wet weather use and should be wide enough to cater for the range of users outlined at the beginning of this section. The dotted paths indicated below are the exceptions, and are proposed to be decomposed granite (deco), to better match with their natural locations.

The total distance of this proposed network is approximately 12.3km, with the deco paths to the south of town being approximately 5kms in length (including the 3.8km return loop running along to the south of the golf course).

The main features of this network include:

- various options of distance for users
- the inclusion of more 'natural' options to the south of town
- connections to points of interest such as the Aquatic Centre and Showgrounds, schools, the Black Stump, main street and shops, and sporting clubs.



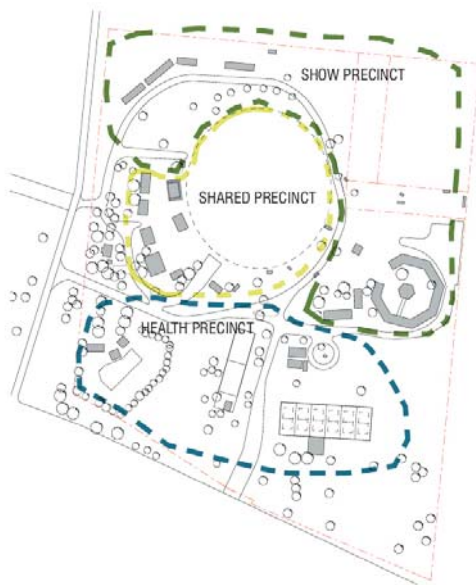
BLACKALL SHOWGROUNDS CONCEPT PLAN

SECTION 6

The concept plan for the Blackall Showgrounds includes three key strategic diagrams that explain the general ideas behind each of the identified 'zones' within the site. These diagrams are explained as follows.

Functional Zones

- an analysis of the general distribution of existing functions in the site
- a recognition of two distinct functions:
 - Health Precinct
 - Show Precinct
- the Shared Precinct contains facilities common to both precincts above
- the diagram also indicates where future development should occur to create a community of facilities.



FUNCTIONAL ZONES

Site Connections

- the introduction of a pedestrian linking element which ties together the main 'hubs' of show activities which are the Side Show Alley, the 'Sheep Pen' and the Camp draft facilities
- the pedestrian linking element also creates a 'Main Street' which future site developments can position themselves alongside or connect to.

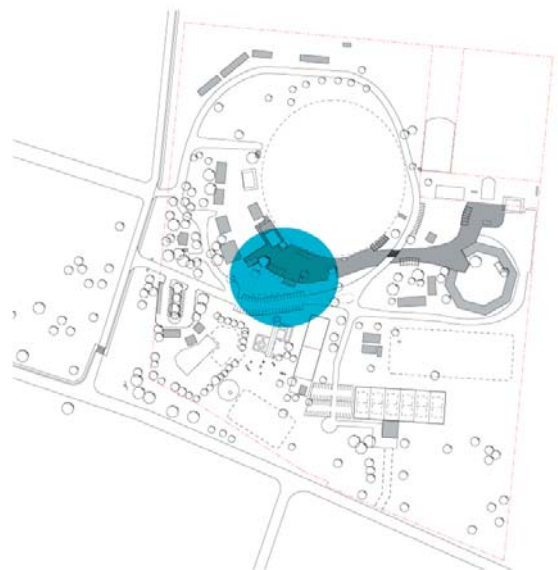
Shared Hub

The location of the primary connection between the Show Precinct and the Health Precinct. This encourages a density of activities and facilities common to all Precincts in this zone.

An A3 copy of the concept plan is included in Appendix Two.



SITE CONNECTIONS



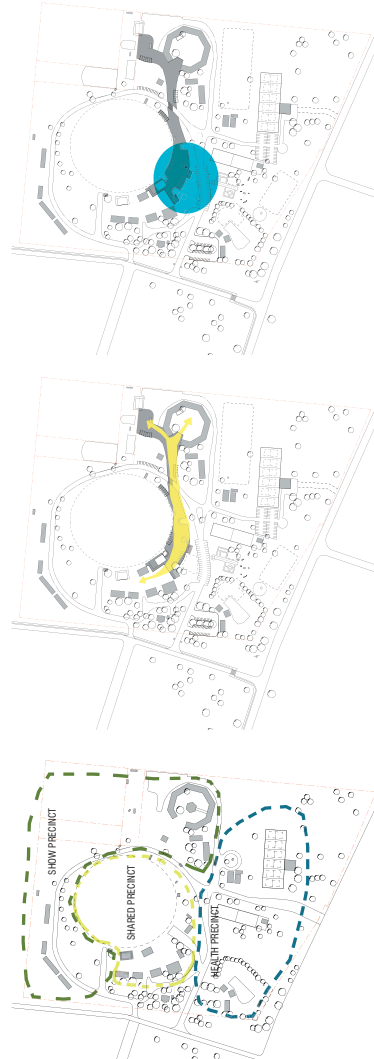
SHARED HUB



EXISTING PLAN



TOWN PLAN



FUNCTIONAL ZONES

SITE CONNECTIONS

SHARED HUB



MAIN FIELD SHEEP PAVILION CATTLE PAVILION CHANGE ROOMS CARPARK AMENITIES

EXISTING SITE

DECEMBER 2009



SITE STRATEGIES
BLACKALL SHOW GROUNDS



NATURAL SHADING TO PEDESTRIAN SPACES



NEW LIGHTWEIGHT STRUCTURES



SHADED OPEN SPACE



BIKE EDUCATION TRACK



NEW CATERING BUILDING



MAIN FIELD



NEW SHELTER



NEW PEDESTRIAN LINK



BIKE PATH



NEW PEDESTRIAN LINK



NEW SHELTER



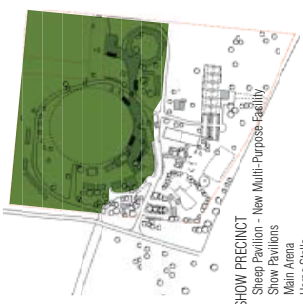
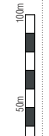
EXISTING AVENITIES



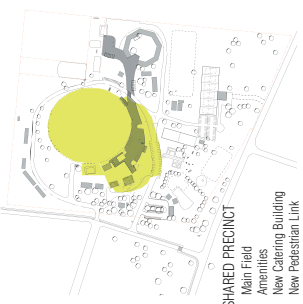
TO POLOCRASSE FIELDS

LEGEND

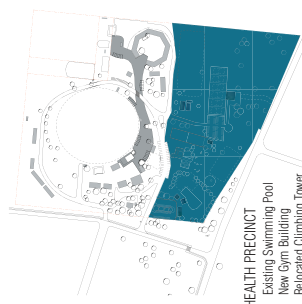
- EXISTING BUILDINGS
- EXISTING VEGETATION
- NEW LOW MAINTENANCE LANDSCAPING
- NEW BUILDING OR CHANGE OF USE
- NEW SHADE STRUCTURE



- SHOW PRECINCT**
- Sheep Pavilion - New Multi-Purpose Facility
 - Show Pavilions
 - Main Arena
 - Horse Stalls
 - New Campdraft Facility
 - Rodeo Facility
 - PoloCrosse Fields



- SHARED PRECINCT**
- Main Field
 - Amenities
 - New Catering Building
 - New Pedestrian Link
 - New Shade Structures
 - Grandstand
 - Ring Road & Cycle Path
 - New Carparking
 - New Low Maintenance Landscaping
 - Relubricated Change Rooms
 - Multi-Purpose Building



- HEALTH PRECINCT**
- Existing Swimming Pool
 - New Gym Building
 - Relocated Climbing Tower
 - New Bike Education Track
 - New Basic Outdoor Gym Equipment
 - Tennis Club
 - Netsball Courts
 - Camping Overflow Area
 - Powered Camping Site
 - SES Facility
 - Girl Guide Building
 - New Carpark

DECEMBER 2009



PROPOSED SITE MASTERPLAN

**PEDESTRIAN PRECINCT LINK
BLACKALL SHOW GROUNDS**

RECOMMENDATIONS

SECTION

7

The Blackall Tambo Regional Council Sport and Recreation Plan is an opportunity for Council to maintain and build upon the two Shires' diversity of sporting facilities, parks for locals and visitors, play spaces for children and young people and pedestrian paths.

Implementation of the recommendations outlined in this Plan will continue the good results that both former Councils and the community have achieved over many years.

The dominant theme that came through the range of consultation processes and analysis is that there is a range of facility improvements that will enhance sport and recreation in the region. There is a good range of facilities but minor enhancements are desired to improve the experience or attract additional players.

The recommendations of this study are detailed below and are grouped into four strategic areas. These are:

1. Maintenance and improvement of existing facilities and programs
2. New facilities, programs and initiatives
3. Viability of sport and recreation groups
4. Council policies, coordination and management arrangements.

Priorities are assigned for each action. A high recommendation should be undertaken as soon as resources allow while medium (in the next 2-5 years) and low priorities (when resources allow) are not as urgent. However, should resources become available, in most cases projects can be brought forward. Prioritisation is often about spreading the available resources rather than the actual timing of the need.

Specific recommendations for individual sporting areas are included in the Sport and Recreation Facilities section (Section 4).

Maintenance and Improvement of Existing Facilities and Programs

No.	Recommendation	Priority	Indicative Cost
1	Increase maintenance to parks and sporting fields within budgetary constraints, Where possible, include fertilising, aeration and the installation of automatic irrigation systems to sports fields.	High	Budget to be allocated
2	Install thermal blanket/solar heating to the Tambo Aquatic Centre so that the water is warmer at the start and end of the season.	High	\$10,000 (blanket) \$50,000 (solar heating)
3	Liaise with Blackall and Tambo State Schools, and St Joseph's Catholic Primary School to establish processes and procedures for community access of newly developed sports fields and indoor sport and recreation facilities.	High	Staff time only
4	Undertake a detailed engineering investigation of the integrity of the main Blackall swimming pool. Final report to also include recommendations regarding a new or extended spa pool facility to cater for the existing and future demand.	High-Medium	\$50,000 - \$60,000
5	Develop pathway networks for both Blackall and Tambo as detailed in this Sport and Recreation Plan. Pathway development should include the placing markers at 0.5km distances indicating the distance travelled/remaining, shaded seats at regular intervals and appropriately located water taps/bubblers.	Medium and Ongoing	Budget to be allocated
6	Install basic water play facilities at both aquatic centres. These could include features such as water cannons, mushrooms and various water jets.	Medium	\$100,000 - \$200,000
7	Facilitate the relocation of the Tambo Polocrosse's main field to the existing Campdraft/Rodeo arena. An on-site meeting with representatives from both clubs, their governing bodies and Council should be arranged immediately to determine a solution for developing a surface that will satisfy all users and stakeholders. This will provide Council with an opportunity to reiterate that it is the Trustee of the land and as such, is responsible for determining its best possible use. This will allow the site to be developed as precinct, including the most appropriate location for the new building in the centre of the site, servicing all users - especially those using the main arena. It will also maximise opportunities in obtaining external funding for the completion of the arena's perimeter fence.	Medium	\$100,000 - \$200,000 (depending on level of surface alteration and including fencing and light relocation)
8	Council to investigate the viability of taking on the management of certain aspects of the Barcoo Race Club facility. Council could assume responsibility for the major built structures such as the kitchen and bar areas while the tenant Race Club could be responsible for the more specific racing-related facilities.	Medium	Staff time only
9	Improve the lighting at the Blackall Skate Park and add ancillary facilities such as picnic facilities and playground. This will better cater for families and create a small precinct, with opportunities to expand in the future due to the availability of adjacent land.	Medium	\$80,000
10	Assist organisations that have identified their needs in this Plan or through other development plans lodged with Council or Sport and Recreation Services.	Ongoing	Staff time only
11	Develop the Blackall Showground site as per the concept plan in this Sport and Recreation Plan.	Ongoing	Budget to be allocated

New Facilities, Programs and Initiatives

No.	Recommendation	Priority	Indicative Cost
12	<p>Development of a Youth Centre in Blackall.</p> <p>The Memorial Hall will soon have space available for such a facility and it is perfectly located in the centre of Town and adjacent to the existing sake park. This facility can be developed as the headquarters of all youth activities, housing the relevant staff and volunteers and pool of the required equipment for a range of youth activities.</p>	High	\$5,000-\$10,000
13	<p>Investigate opportunities with Sport and Recreation Services (Department of Communities) and relevant training providers to provide accreditation courses for residents and club members in identified areas of fitness and health programs (gym supervision, aquatic programs, etc)</p>	High and ongoing	\$5,000
14	<p>Develop community gymnasiums (with basic facilities) in both Blackall and Tambo.</p> <p>In, or adjacent, to the Aquatic Centre would be the best location for the Blackall facility with negotiations to be undertaken with the current pool manager regarding accessing and training staff with the required qualifications.</p> <p>Following extensions to the Sports Club clubhouse in Tambo, this would be the ideal location for such a facility, adjacent to the Aquatic Centre and within a developing sport and recreation precinct.</p>	High	Costing subject to designs but likely to be in the order of \$200,000 - \$600,000 (for both)
15	<p>Install outdoor fitness equipment in both Blackall and Tambo.</p> <p>Possible locations within Blackall include the parkland area across the highway from Ram Park, or adjacent to the camping area or skate park.</p> <p>The best location for such equipment in Tambo would be at the dam.</p>	Medium	\$200,000-\$400,000
16	<p>Investigate the feasibility of the development of an artificial lake/dam at Blackall.</p>	Medium	\$50,000
17	<p>Investigate the provision of an expanded dance program, especially aimed at primary school aged children and offering a range of disciplines (hip hop, rap, ballroom, etc).</p>	Medium	\$5,000

Viability of Sport and Recreation Groups

No.	Recommendation	Priority	Indicative Cost
18	<p>Facilitate a program of education and training for sport and recreation groups across focusing on identified training needs. Training and club development should initially focus on:</p> <ul style="list-style-type: none"> • club governance and committee management • funding and grant applications • advertising and marketing • strategic and business planning. <p>Contact should be made with Sport and Recreation Services (Department of Communities) to explore the full range of available opportunities, including funding options.</p>	High and Ongoing	\$10,000
19	<p>Liaise with Sport and Recreation Services (Department of Communities) to improve:</p> <ul style="list-style-type: none"> • knowledge of, and access to, funding opportunities • the co-ordination of an annual process for clubs to notify Council of changes to office bearers or their contact details. Details should be able to be made public to interested parties on Council's website. <p>Further, Council should formalise an email list to rapidly distribute information that may be of interest to sport and recreation organisations (e.g. announced funding programs or training opportunities).</p>	High	Staff time only
20	Seek volunteers interested in assisting with the operation of the proposed youth facilities.	High	Staff and community time only
21	<p>Develop a Club Information Pack to be distributed to all sport and recreation organisations to assist in a range of areas including, but not necessarily limited to:</p> <ul style="list-style-type: none"> • club management • volunteers • dealing with Council • development plans • event management • funding 	High-Medium	Nil - additional outcome of Sport and Recreation Plan

Council Policies, Coordination and Management Arrangements

No.	Recommendation	Priority	Indicative Cost
22	<p>Council to adopt a single policy in regard to providing assistance to community sport and recreation organisations.</p> <p>This will involve a combination of the existing practices with the suggestion inclusions:</p> <ul style="list-style-type: none"> • Maintain at least, and increase if possible, Council funding for the general maintenance and minor development of sport and recreation facilities. This funding could also be used to subsidise club grant applications where the club is required to contribute a percentage of the total project costs. • Adopt the Aids to Society model from the former Tambo Shire and apply it across the region. • Continue with the current model for funding to the Blackall Multi-sports Association and facilitate the development of a similar multi-sports association in Tambo. This group should then be eligible for funding in a similar manner to Blackall's (although the amount of funding may be proportionally less). This practice encourages the member clubs to be more responsible for the allocation of such funding, promoting cooperation and distancing Council from specific allocations. 	High	Budget to be allocated
23	<p>Consider making future budget allocations to subsidise applications to the recently revised Sport and Recreation Infrastructure Program (Minor category).</p> <p>Under this program, applicants must have one-quarter of the total project cost while Sport and Recreation Services will contribute up to three-quarters of the project cost. Budget permitting, Council should consider providing 50% of the contribution of the club (one-eighth of total project cost) subject to the club providing the same, and being successful in their final application.</p> <p>This process ensures the club takes responsibility for the project by financially contributing, but the majority of project costs (seven-eighths) are still borne by Council and the State Government, minimising the operational impact on the club. As an example, by contributing \$10,000 under this system, Council would see the completion of a significant community project to the value of \$80,000.</p> <p>To ensure the equity and transparency of this process, it is recommended that Council invites clubs to submit proposals for their consideration under this scheme. Submissions should be evaluated against criteria similar to that of the Sport and Recreation Infrastructure Program (such as community benefit, ability to deliver, project viability, etc) to determine which project/s will be supported.</p> <p>It should be noted that Councils are now eligible to apply directly to all categories of this Program, where in the past they could only apply for projects under the former Major Facilities Program. However, in the Minor and Medium categories, Councils are only able to receive up to 60% of the total project cost, and under the Major category, a limit of 50% of the total project cost still applies. Appendix One contains more information on the new State Government funding programs.</p>	Medium and ongoing	Budget to be allocated
24	Review the achievement of the recommendations of this Strategy annually and undertake a major review in five years.	Medium and ongoing	Staff time only

APPENDIX ONE

**POTENTIAL
FUNDING
SOURCES**

POTENTIAL FUNDING SOURCES

The details provided below are based on the most recent information available. As grant schemes are reviewed on a regular basis the information should be checked for currency before developing an application.

For instance, the Queensland Government has just reviewed its Sport and Recreation Funding Programs with the changes included in the table below.

Web addresses have been listed where possible to allow for ready checking of the latest details. Quite often application forms and other details can be downloaded from the websites.

The Queensland Government provides a program that helps search for available grants: www.qld.gov.au/grants/discoverbywizard.action

Some of the more useful websites that host links to, or detail information on available grants are listed below:

- Our Community – www.ourcommunity.com.au
- Australian Government Grants Link – www.grantslink.gov.au

Queensland - Sport and Recreation Funding Programs

Subsidy / Grant	Aim/ Criteria	Further information/ contact																							
Sport and Recreation Active Inclusion Program	Supports communities by providing funding for activities and education to increase access to sport and recreation for individuals and groups facing barriers to participation within the community.	www.sportrec.qld.gov.au/Funding/Newfundingprograms/ActiveInclusionProgram.aspx																							
Sport and Recreation Infrastructure Program	<p>Provides funding to not-for-profit sport or recreation organisations, local governments, not-for-profit Aboriginal and Torres Strait Islander organisations, and Queensland State and Independent Schools towards the development or construction of infrastructure for participation in structured and unstructured sport or recreation.</p> <p>Various levels of contributions are available across three levels of projects as follows:</p> <table border="1"> <thead> <tr> <th>Category</th> <th>Total eligible project costs (\$)</th> <th>Max. funding contribution (\$)</th> <th colspan="2">Max. funding contribution (%)</th> </tr> </thead> <tbody> <tr> <td rowspan="2">1 (Minor)</td> <td rowspan="2">Up to \$400,000</td> <td>\$240,000</td> <td>Councils</td> <td>60</td> </tr> <tr> <td>\$300,000</td> <td>Other organisations</td> <td>75</td> </tr> <tr> <td>2 (Medium)</td> <td>\$400,001 - \$1.25 million</td> <td>\$240,001 - \$750,000</td> <td colspan="2">All eligible organisations</td> </tr> <tr> <td>3 (Major)</td> <td>Over \$1.25 million</td> <td>\$750,001 - \$2 million</td> <td colspan="2">All eligible organisations</td> </tr> </tbody> </table>	Category	Total eligible project costs (\$)	Max. funding contribution (\$)	Max. funding contribution (%)		1 (Minor)	Up to \$400,000	\$240,000	Councils	60	\$300,000	Other organisations	75	2 (Medium)	\$400,001 - \$1.25 million	\$240,001 - \$750,000	All eligible organisations		3 (Major)	Over \$1.25 million	\$750,001 - \$2 million	All eligible organisations		www.sportrec.qld.gov.au/Funding/Newfundingprograms/InfrastructureProgram.aspx
Category	Total eligible project costs (\$)	Max. funding contribution (\$)	Max. funding contribution (%)																						
1 (Minor)	Up to \$400,000	\$240,000	Councils	60																					
		\$300,000	Other organisations	75																					
2 (Medium)	\$400,001 - \$1.25 million	\$240,001 - \$750,000	All eligible organisations																						
3 (Major)	Over \$1.25 million	\$750,001 - \$2 million	All eligible organisations																						
Local Sport and Recreation Jobs Plan	Assists a cluster of local community organisations and councils by building their capacity through the employment of a Local Sport and Recreation Coordinator.	www.sportrec.qld.gov.au/Funding/Newfundingprograms.aspx																							
State Sport and Recreation Organisation Program	Provides funding to state sport and active recreation organisations to promote and support the development of healthy and socially inclusive communities through sport and recreation activities and programs.	www.sportrec.qld.gov.au/Funding/Newfundingprograms.aspx																							

Walk and Cycle Grant Schemes

Subsidy / Grant	Aim/ Criteria	Further information/ contact
Safe Walking and Pedalling Program (SWAPP)	This program (SWAPP) is aimed at school students who walk or cycle to and from school. It involves the review of the footpaths, bicycle paths and infrastructure children use within 3.2 km of a school. Rather than simply making children adopt a particular safe route to and from school, the program also aims to increase the number of walking and cycling trips taken by children.	Contact your local Queensland Transport road safety advisor who can work with local governments, local communities and schools to jointly prepare Safe Walking and Pedalling applications. www.transport.qld.gov.au/Home/Assistance_and_services/Grants_and_subsidies/Safe_walking_and_pedalling_program_swapp
Safe School Travel (SafeST) Subsidy Scheme	SafeST is a collection of programs, schemes and initiatives designed to improve transport safety for all children regardless of whether they walk, cycle or travel as passengers in buses or cars.	Contact your local Queensland Transport road safety advisor for more information. www.transport.qld.gov.au/Home/Assistance_and_services/Grants_and_subsidies/Safe_school_travel_safest_subsidy_scheme
Transport Infrastructure Development Scheme (TIDS)	This scheme will fund dedicated bikeways, shared paths and on-road bike lanes on a 50/50 subsidy basis.	For further information on applying for funding, local government should liaise direct with your nearest Department of Main Roads district office
Regional Centres Program	A 50/50 subsidy for capital works such as central business districts revitalisation and enhancement of regional recreation and tourist facilities for centres with a population larger than 15,000. This subsidy can be used to help fund cycling infrastructure as part of larger projects.	www.lgp.qld.gov.au/?ID=101
Cycling Promotion Fund	Funding for programs and projects that will increase cycling as a transport or health/ recreational option.	www.cyclingpromotion.com
Federal - Roads to Recovery	Funding for roads in rural, regional and metropolitan areas focusing on renewal of local roads as an element of social and economic infrastructure. Funding can include the construction of cycle ways.	www.auslink.gov.au/funding/r2r/index.aspx
Federal – Australian Tourism Development Program	Funding for tourism projects in regional and rural areas. Cycling infrastructure such as paths and maps may be eligible. There are two separate categories: Tourism Projects and Integrated Tourism Development Projects.	www.ausindustry.gov.au
Federal – Investing in Our Schools Program	Funding for state and non-state school infrastructure according to school community priorities. The program looks at small scale projects which improve and enhance the infrastructure of schools in accordance with priorities identified by school communities, and as such end-of-trip cycle facilities may be eligible for funding under this program.	www.dest.gov.au/sectors/school_education#Investing_in_Our_Schools_Programme_2006
Federal - CycleConnect	Funding for the installation of secure bicycle parking at public transport nodes.	www.environment.gov.au/atmosphere/airquality/cycleconnect.html

Australian Government Grants

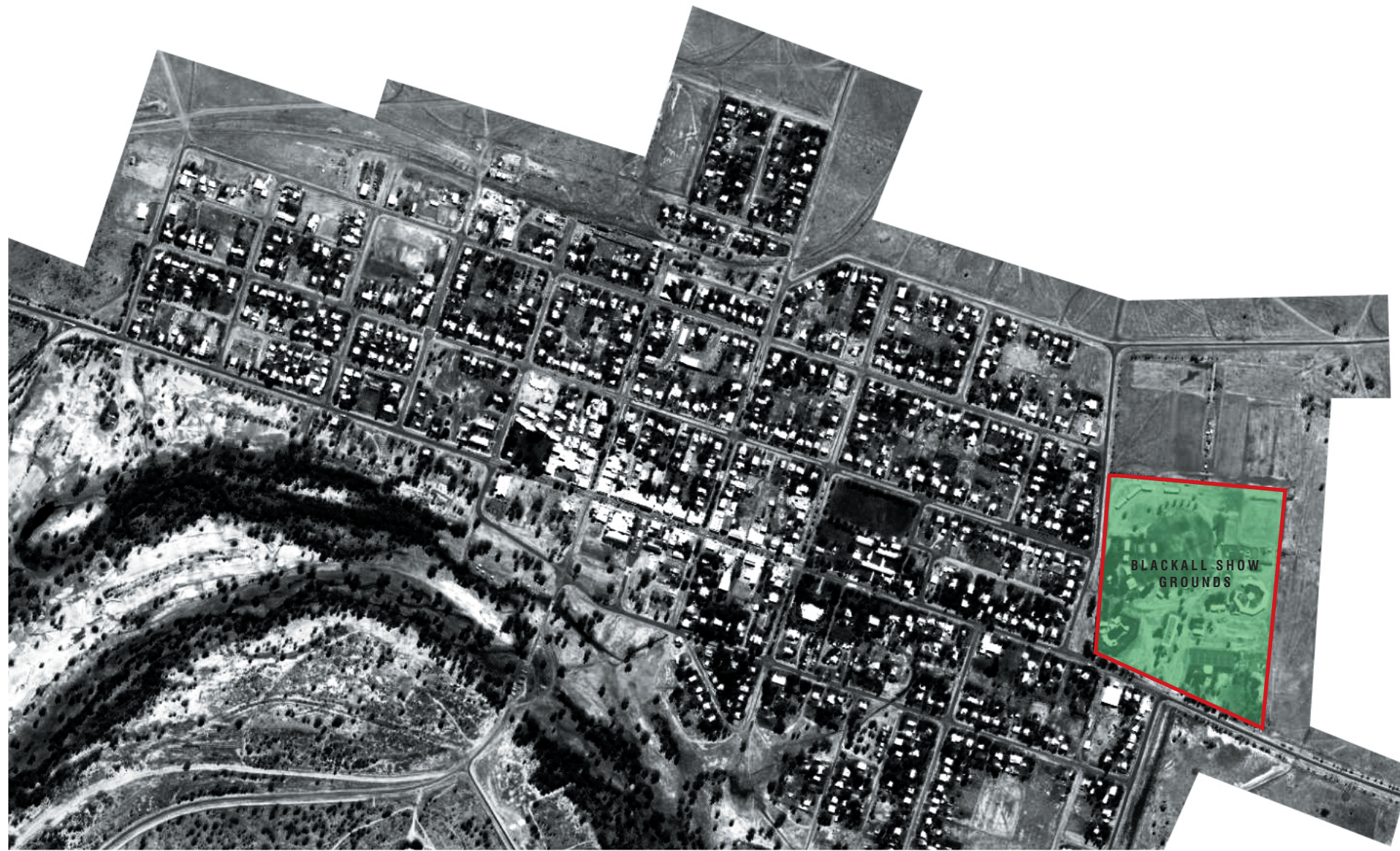
Subsidy / Grant	Aim/ Criteria	Further information/ contact
Community Heritage Grants (CHG) Program	<p>Aims to preserve and provide access to locally held nationally significant cultural heritage collections across Australia. The program provides grant funding of up to \$10,000 for preservation projects, and preservation and collection management training through community based workshops.</p> <p>The Community Heritage Grants (CHG) Program is funded by the Australian Government through the National Library of Australia; the Department of Communications, Information Technology and the Arts; the National Archives of Australia; the National Film and Sound Archive and the National Museum of Australia.</p>	www.nla.gov.au/chg
Living in Harmony Community grants program	<p>The Australian Government's Living in Harmony initiative is primarily a community based education program. The objectives of the program are to develop more harmonious community relations to improve communication and understanding between people from diverse ethnic, religious and indigenous backgrounds and the wider community, and to address the issues of racism in the community.</p>	www.harmony.gov.au/grants/index.htm

Community Foundation and Trust based Funding

Subsidy / Grant	Aim/ Criteria	Further information/ contact
ANZ Charitable Grants	Each year funds are paid to charitable organisations or for charitable purposes in the community on behalf of Trusts administered by ANZ Trustees. Some are discretionary in nature whilst applications are accepted for others.	www.anz.com/aus/fin/trustees
Besen Family Foundation	The foundation seeks to encourage, nurture and assist in both the maintaining and also developing of important programs and projects and covers three broad areas of Arts and Culture, Health and Welfare, and Jewish Interests. It provides support mainly through financial grants. Some areas are restricted to Victorian projects though the Grants for Arts and Culture are open to not-for-profit organisations throughout Australia. Preference will be given to projects that are innovative and challenging.	www.besenfoundation.org.au
BlueCare Congregational Community Development Fund	Is an initiative of Blue Care and UnitingCare Queensland. The fund is designed to support Uniting Church congregations looking to establish innovative programs and services in their local community.	www.ucareqld.com.au/index.php?option=com_content&task=view&id=1&Itemid=3
Communityhelp Grants Program	Supports local organisations that are working to make communities safer. Community organisations can apply to receive a grant of up to \$5,000 in the areas of crime prevention, injury prevention, emergency services or the environment.	www.nrma.com.au/pub/nrma/community/help-program/index.shtml
Foundation for Rural & Regional Renewal - Small Grants for Small Rural Communities Program	A small grants program for small rural Australian communities will offer approximately \$300,000 a year in grants to benefit people in rural and remote communities.	www.frrr.org.au
Foundation for Rural & Regional Renewal – Caring for Ageing in Rural Australia	Not-for-profit organisations can apply for projects and activities that directly benefit the ageing population in their community. Projects that help redress disadvantage caused by remoteness. Grants may range from \$100 up to \$10,000. From time to time this Program may identify priority areas for support.	www.frrr.org.au
Gambling Community Benefit Fund	Provides funds to strengthen the capacity of non-government organisations to provide community services and activities that benefit their local communities. The Fund provides one-off grants of up to \$30,000 to Queensland based not-for-profit community groups. The closing dates for the grant rounds are: 31 March, 30 June, 30 September and 31 December.	www.gcbf.qld.gov.au
Holden Community Support Program	Support may consist of a partnership, cash donation, or a donation 'in kind'. Donations 'in kind' include materials for fundraising events such as stickers for show bags and items for raffle prizes. It also includes one-off donations of larger objects that serve to assist education and technological innovation.	www.holden.com.au/www-holden/jsp/environmentcommunity/environmentcommunity.jsp?link=communitysupport&heading=guidelines
Jupiter's Casino Community Benefit Fund	The Jupiter's Casino Community Benefit Fund administers the community benefit levy paid by the Jupiter's and Conrad International Treasury Casinos. The Fund provides funds to community organisations that provide facilities or services of benefit to the community.	www.jccbf.org.au

APPENDIX TWO

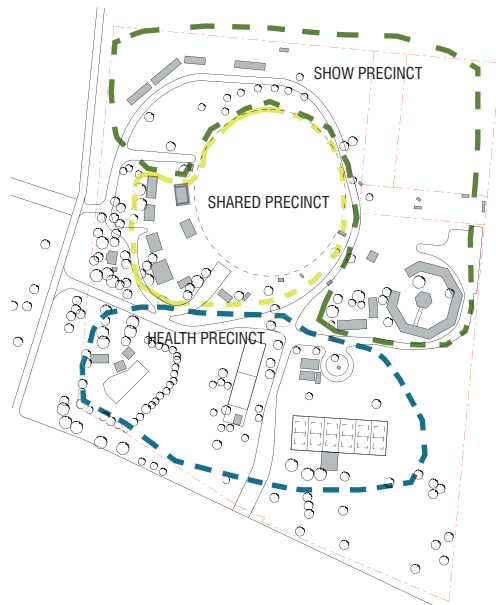
**BLACKALL
SHOWGROUNDS
CONCEPT PLAN**



TOWN PLAN



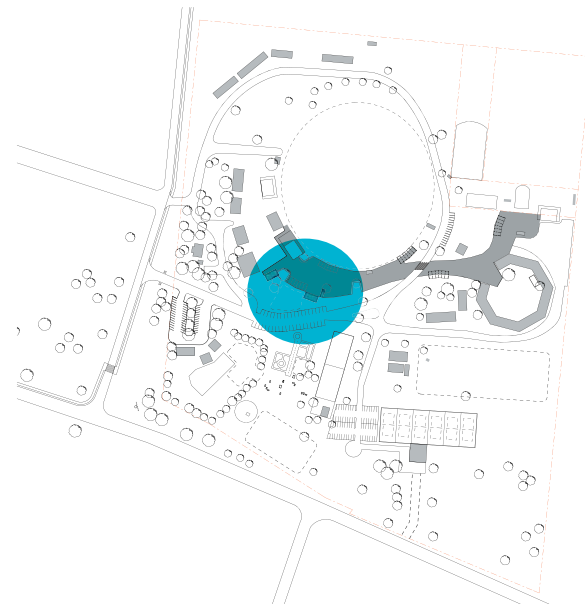
EXISTING PLAN



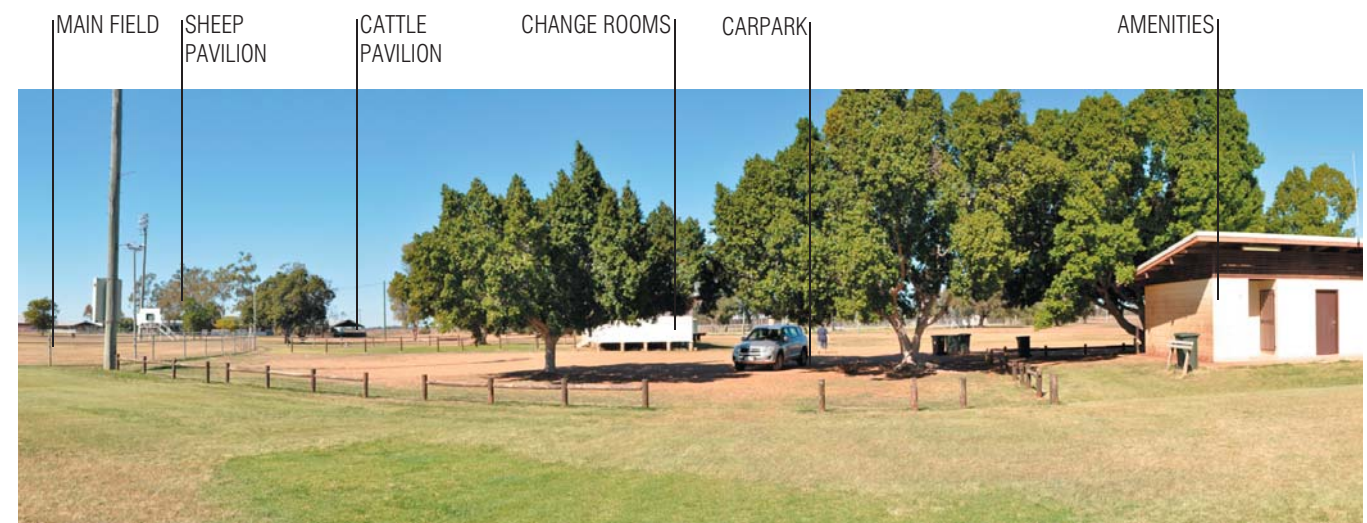
FUNCTIONAL ZONES



SITE CONNECTIONS



SHARED HUB



EXISTING SITE

SITE STRATEGIES
BLACKALL SHOW GROUNDS

DECEMBER 2009



NATURAL SHADING TO PEDESTRIAN SPACES



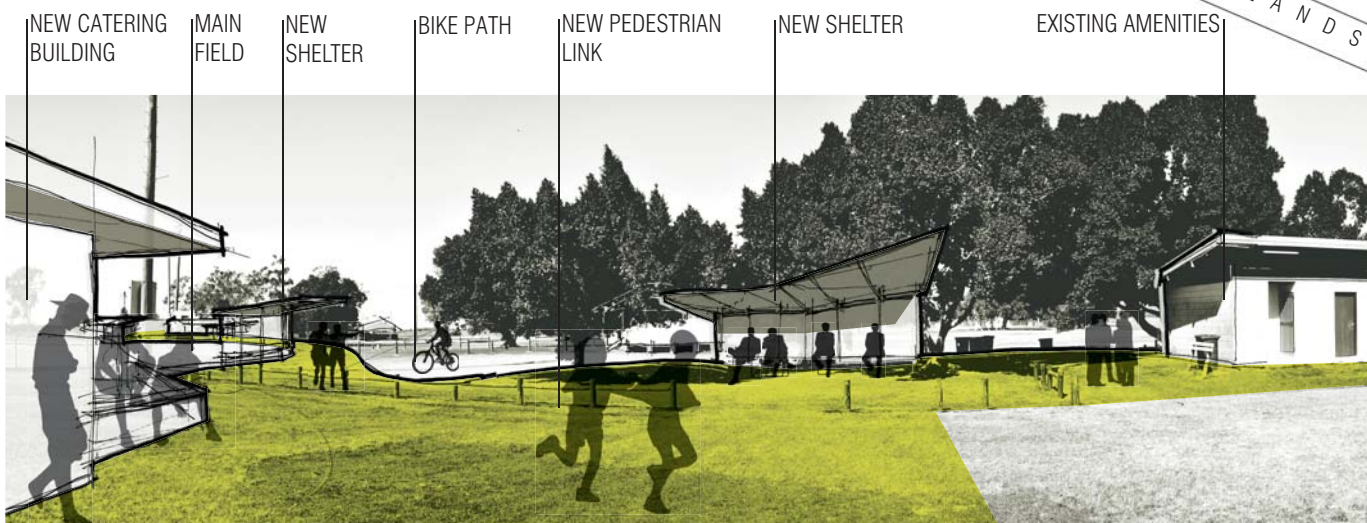
NEW LIGHTWEIGHT STRUCTURES



SHADED OPEN SPACE



BIKE EDUCATION TRACK

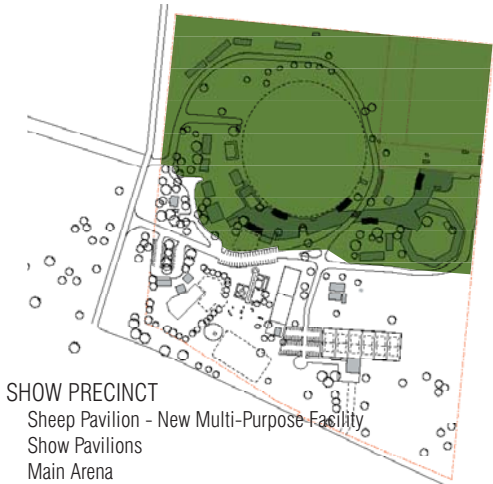


PEDESTRIAN PRECINCT LINK
BLACKALL SHOW GROUNDS

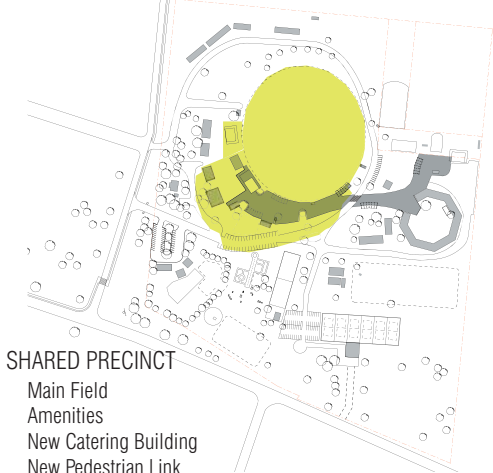


LEGEND

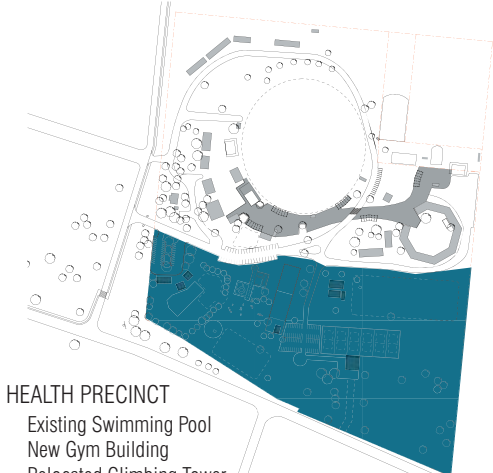
- EXISTING BUILDINGS
- EXISTING VEGETATION
- NEW LOW MAINTENANCE LANDSCAPING
- NEW BUILDING OR CHANGE OF USE
- NEW SHADE STRUCTURE



- SHOW PRECINCT**
- Sheep Pavilion - New Multi-Purpose Facility
 - Show Pavilions
 - Main Arena
 - Horse Stalls
 - New Campdraft Facility
 - Rodeo Facility
 - Polocrosse Fields



- SHARED PRECINCT**
- Main Field
 - Amenities
 - New Catering Building
 - New Pedestrian Link
 - New Shade Structures
 - Grandstand
 - Ring Road & Cycle Path
 - New Carparking
 - New Low Maintenance Landscaping
 - Refurbished Change Rooms
 - Multi-Purpose Building



- HEALTH PRECINCT**
- Existing Swimming Pool
 - New Gym Building
 - Relocated Climbing Tower
 - New Bike Education Track
 - New Basic Outdoor Gym Equipment
 - Tennis Club
 - Netball Courts
 - Camping Overflow Area
 - Powered Camping Site
 - SES Facility
 - Girl Guide Building
 - New Carpark

PROPOSED SITE MASTERPLAN

DECEMBER 2009

