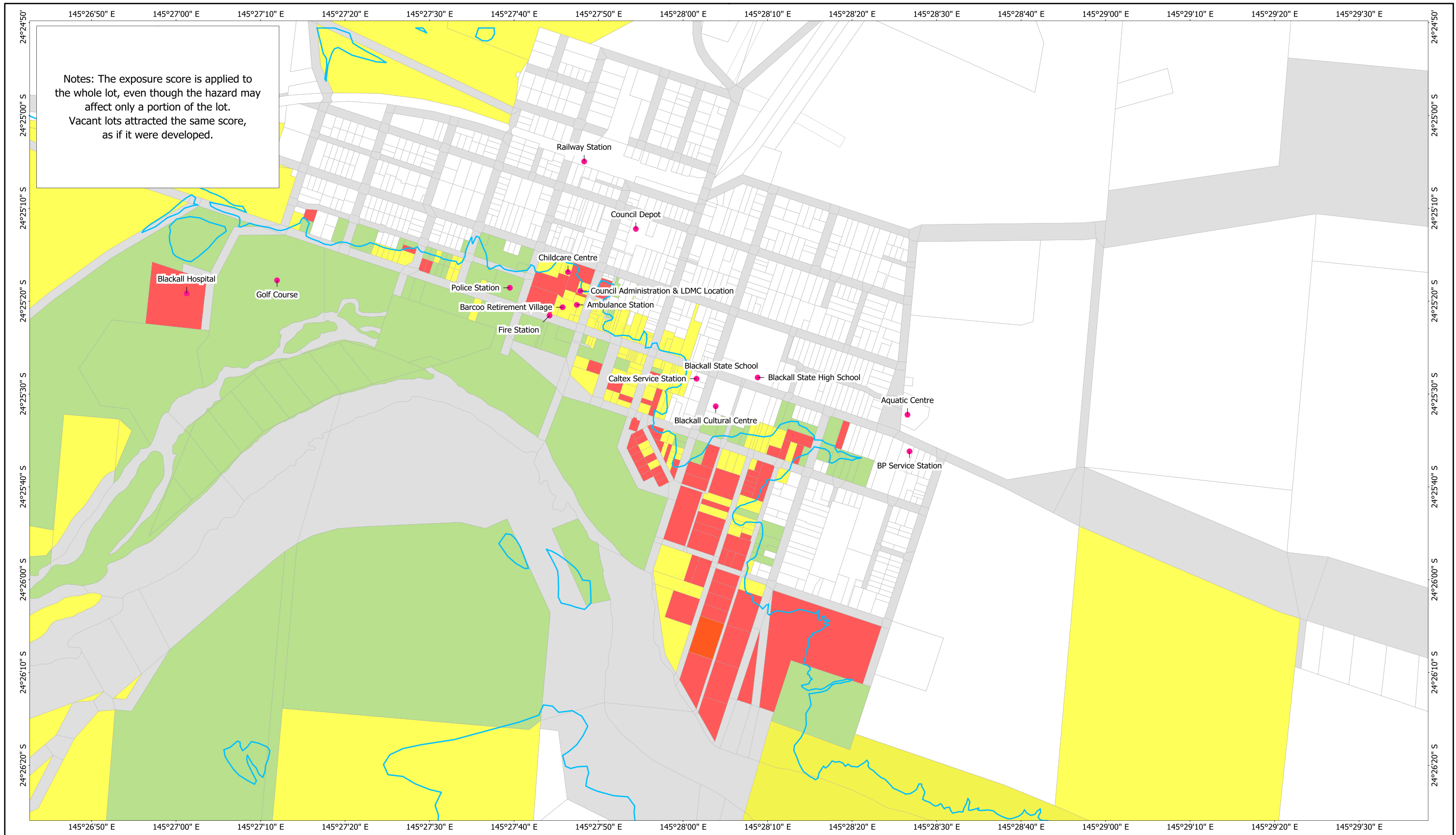


Appendix G

**MAP 15 - FLOOD RISK ASSESSMENT EVALUATION
FOR 2% (1 IN 50 YEARS) FLOOD EVENT**



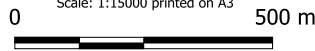
Map 15: Flood Risk Assessment Evaluation For 2% AEP (1 in 50 Years) Flood Event

Job: J13_16_Blackall Flood Risk Management Study
 Client: DC Solutions & Blackall Tambo Regional Council

- Points of Interest
- ▭ Flood Extent
- Vulnerability Score**
- 2
- 3
- 5



Datum: World Geodetic 1984 (WGS84) Auto
 Coordinate System: Mercator
 Scale: 1:15000 printed on A3



This map (the Document) has been prepared by Yarramine Environmental during the course of providing consultancy services to DC Solutions & Blackall Tambo Regional Council. It has been prepared for informational purposes and may not have been prepared for, or be suitable for legal or surveying purposes.

Some information recorded in this Document (the Information) has been provided under license to Yarramine Environmental. Digital Cadastral Data (2013) datasets has been supplied by the Queensland Government (through the Department of Natural Resources and Mines). All other information developed by Yarramine Environmental.

Users of the Information accept all responsibility and risk associated with the use of the Information and should seek independent professional advice in relation to dealings with property.

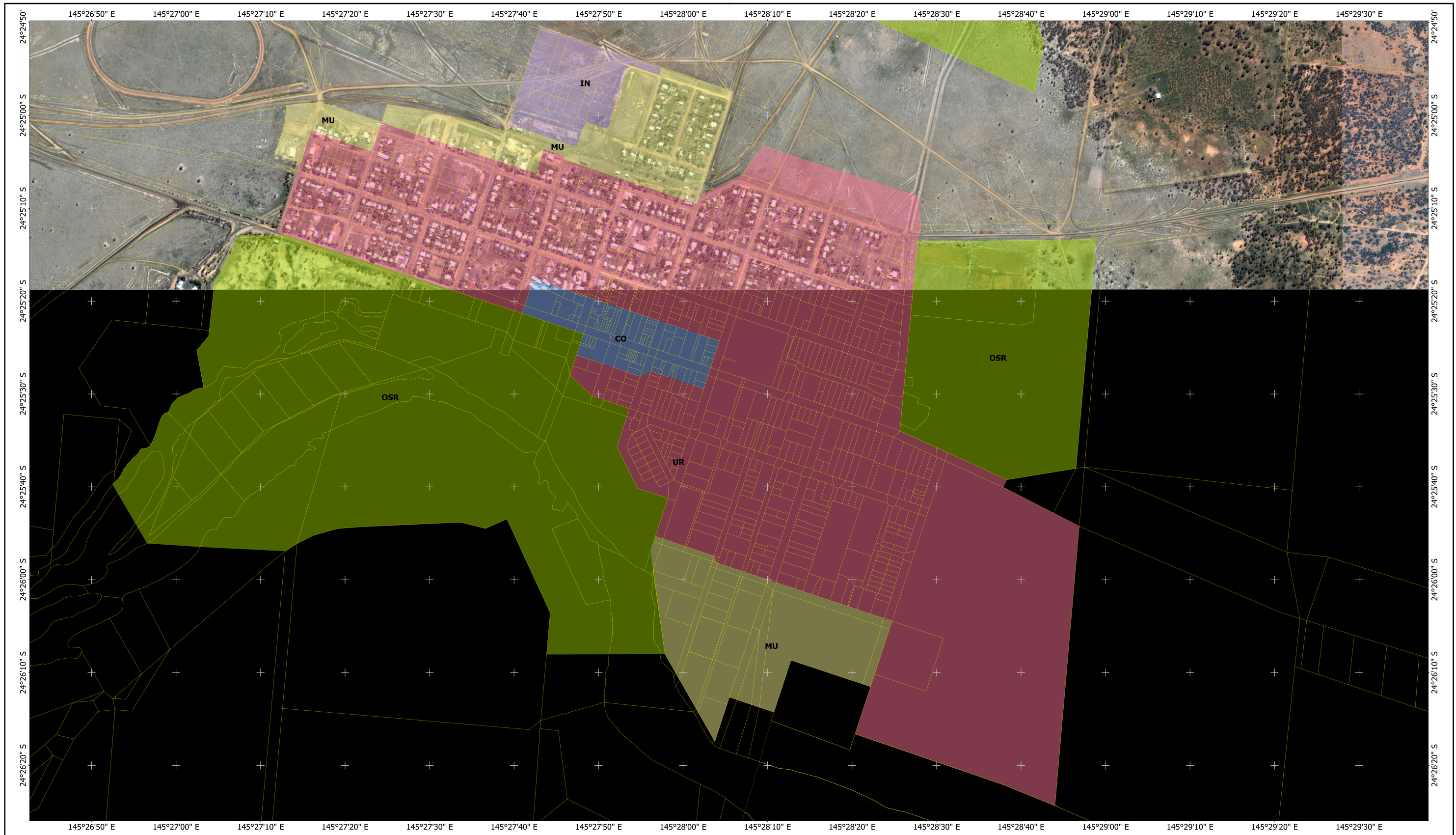
Despite the best efforts of Yarramine Environmental, Yarramine Environmental makes no representation or warranties in relation to the Information, and, to the extent permitted by law, exclude or limit all warranties relating to correctness, positional accuracy, reliability, completeness or currency and all liability for any direct, indirect and consequential costs, losses, damages and expenses incurred in any way (including but not limited to that arising from negligence) in connection with any use of or reliance on the Information.

This Document is not to be on sold or distributed for reward to any third party, used for direct marketing or used in any breach of privacy laws.



Appendix H

MAP 11 - BLACKALL PLANNING SCHEME ZONING



Map 11: Blackall Planning Scheme Zoning

- Planning Scheme Zoning**
- Commercial (CO)
 - Industrial (IN)
 - Mixed Use (MU)
 - Open Space & Recreation (OSR)
 - Urban (UR)
- Digital Cadastre Dec 2013
- Virtual Earth Satellite Image**

Job: J13_16_Blackall Flood Risk Management Study
 Client: DC Solutions & Blackall Tambo Regional Council



Datum: World Geodetic 1984 (WGS84) Auto
 Coordinate System: Mercator
 Scale: 1:15000 printed on A3

0 500 m

This map (the Document) has been prepared by Yarramine Environmental during the course of providing consultancy services to DC Solutions & Blackall Tambo Regional Council. It has been prepared for informational purposes and may not have been prepared for, or be suitable for legal or surveying purposes.

Some information recorded in this Document (the Information) has been provided under license to Yarramine Environmental. Digital Cadastral Data (2013) datasets has been supplied by the Queensland Government (through the Department of Natural Resources and Mines). All other information developed by Yarramine Environmental.

Users of the Information accept all responsibility and risk associated with the use of the Information and should seek independent professional advice in relation to dealings with property.

Despite the best efforts of Yarramine Environmental, Yarramine Environmental makes no representation or warranties in relation to the Information, and, to the extent permitted by law, exclude or limit all warranties relating to correctness, positional accuracy, reliability, completeness or currency and all liability for any direct, indirect and consequential costs, losses, damages and expenses incurred in any way (including but not limited to that arising from negligence) in connection with any use of or reliance on the Information.

This Document is not to be on sold or distributed for reward to any third party, used for direct marketing or used in any breach of privacy laws.

